



Collection: SINGULIER

Finish*:



CP - Chrome

Main features:



Features

- **WEIGHT:** 3.8 kg
- **INSTALLATION TYPE:** 2 holes
- **TYPE:** Single-lever
- **SPOUT PROJECTION:** 82
- **MECHANISM:** Ceramic disc cartridge
- **SHOWER TAPS-DIVERTER:** Discreet automatic diverter around shower hose outlet
- The Singulier range combine elegant, sensuous lines with graceful curves that come together delicately to create a serene, understated look and tranquil sensibility.
- Non-return valve on shower outlet
- **MATERIAL:** Metal
- **NORMS AND REGULATIONS:** NF : IC/A - ECAU : E3/1 C2 A2 U3 - Ge3 - ACS : 10 ACCLY 113
- **FLOW RATE:** 20 l/mn
- **CONNECTION:** With connectors and wall escutcheons
- **HOLE CONFIGURATION:** 150 ± 15
- **MECHANISM GUARANTEE:** 5 years
- Anti-scale aerator

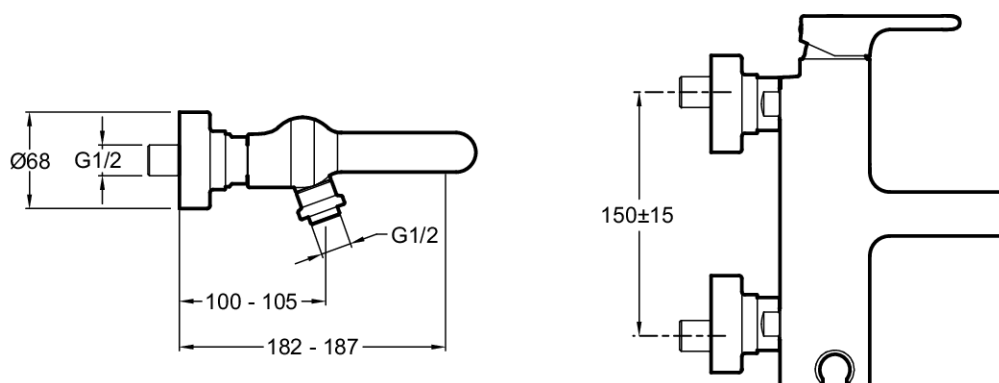
Consumer benefits

- **SAFETY:** Temperature control ring
- **WATER-SAVING FEATURE:** Sensitive stop.
- Built-in handshower holder
- **FINISH:** Chrome guaranteed 10 years

Installation benefits

- **EASE OF INSTALLATION:** Connectors and wall escutcheons

Technical drawing



Product Specification: Single-lever wall-mount bath/shower mixer. E10867. Collection: SINGULIER. WEIGHT: 3.8 kg. MATERIAL: Metal. INSTALLATION TYPE: 2 holes. NORMS AND REGULATIONS: NF : IC/A - ECAU : E3/1 C2 A2 U3 - Ge3 - ACS : 10 ACCLY 113. TYPE: Single-lever. FLOW RATE: 20 l/mn. SPOUT PROJECTION: 82. CONNECTION: With connectors and wall escutcheons. MECHANISM: Ceramic disc cartridge. HOLE CONFIGURATION: 150 ± 15. SHOWER TAPS-DIVERTER: Discreet automatic diverter around shower hose outlet. MECHANISM GUARANTEE: 5 years. The Singulier range combine elegant, sensuous lines with graceful curves that come together delicately to create a serene, understated look and tranquil sensibility.. Anti-scale aerator. Non-return valve on shower outlet.