

SINGULIER - Single-lever wall-mount shower mixer

E10869

Jacob Delafon
PARIS



Collection: SINGULIER

Finish*:



CP - Chrome

Main features:



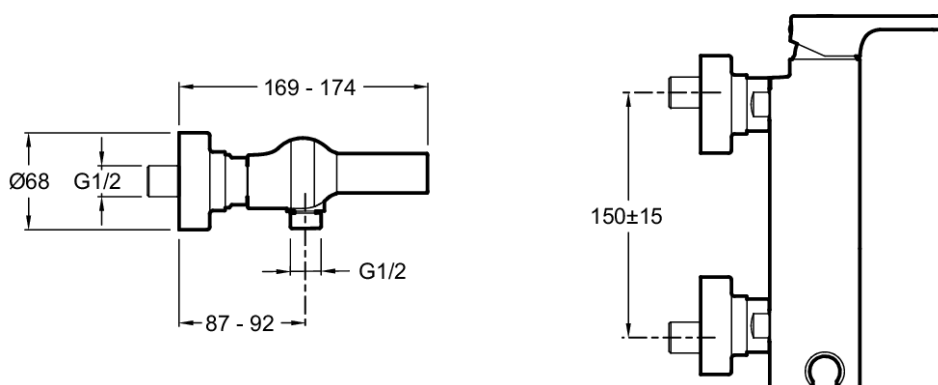
Features

- **WEIGHT:** 3.1 kg
- **INSTALLATION TYPE:** 2 holes
- **TYPE:** Single-lever
- **CONNECTION:** With connectors and wall escutcheons
- **HOLE CONFIGURATION:** 150 ± 15
- The Singulier range combine elegant, sensuous lines with graceful curves that come together delicately to create a serene, understated look and tranquil sensibility.
- Non-return valve on shower outlet
- **MATERIAL:** Metal
- **NORMS AND REGULATIONS:** NF : IA - ECAU : E1 C2 A3 U3 - Ge3
- **FLOW RATE:** 13 l/mn
- **MECHANISM:** Ceramic disc cartridge
- **MECHANISM GUARANTEE:** 5 years
- Temperature limiter ring

Consumer benefits

- Sensitive flow control.
- Integral handshower support

Technical drawing



Product Specification: Single-lever wall-mount shower mixer. E10869. Collection: SINGULIER. WEIGHT: 3.1 kg. MATERIAL: Metal. INSTALLATION TYPE: 2 holes. NORMS AND REGULATIONS: NF : IA - ECAU : E1 C2 A3 U3 - Ge3. TYPE: Single-lever. FLOW RATE: 13 l/mn. CONNECTION: With connectors and wall escutcheons. MECHANISM: Ceramic disc cartridge. HOLE CONFIGURATION: 150 ± 15 . MECHANISM GUARANTEE: 5 years. The Singulier range combine elegant, sensuous lines with graceful curves that come together delicately to create a serene, understated look and tranquil sensibility.. Temperature limiter ring. Non-return valve on shower outlet.

*Due to possible variations in computer and printer calibrations, technical factors and certain finish characteristics, the colors you see may not accurately portray the actual colors and are provided as a guide only.

www.jacobdelafon.com

This document is not contractual