



Collection: SINGULIER

Finish*:



CP - Chrome

Main features:



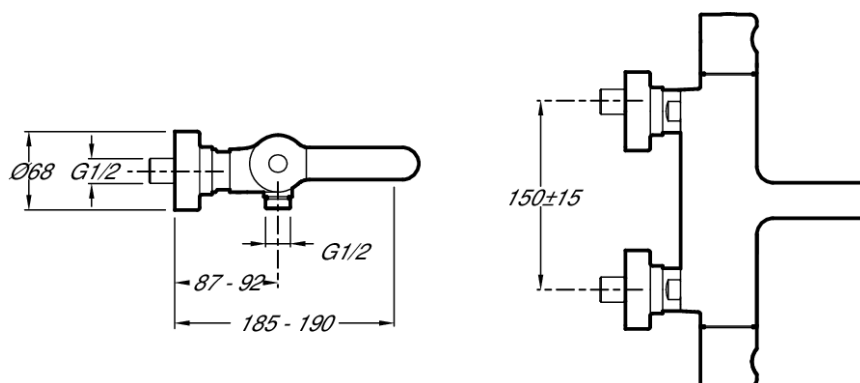
Features

- **WEIGHT:** 4 kg
- **INSTALLATION TYPE:** 2 holes
- **TYPE:** Single-lever
- **SPOUT PROJECTION:** 98
- **MECHANISM:** Expandable wax thermostatic cartridge
- **SHOWER TAPS-DIVERter:** Automatic diverter built into flow handle
- **WARM BODY:** Yes
- The Singulier range combine elegant, sensuous lines with graceful curves that come together delicately to create a serene, understated look and tranquil sensibility.
- Non-return valves on supply hoses
- **MATERIAL:** Metal
- **NORMS AND REGULATIONS:** NF : II/A - ECAU : E3/1 C3 A1 U3
- **FLOW RATE:** 20 l/mn
- **CONNECTION:** With connectors and wall escutcheons
- **HOLE CONFIGURATION:** 150 ± 15
- **SAFETY STOP:** 38°C
- **MECHANISM GUARANTEE:** 5 years
- Water saver
- Anti-scale aerator

Consumer benefits

- **SAFETY:** Maximum temperature set at 50°

Technical drawing



Product Specification: Thermostatic wall-mount bath/shower mixer. E10870. Collection: SINGULIER. WEIGHT: 4 kg. MATERIAL: Metal. INSTALLATION TYPE: 2 holes. NORMS AND REGULATIONS: NF : II/A - ECAU : E3/1 C3 A1 U3. TYPE: Single-lever. FLOW RATE: 20 l/mn. SPOUT PROJECTION: 98. CONNECTION: With connectors and wall escutcheons. MECHANISM: Expandable wax thermostatic cartridge. HOLE CONFIGURATION: 150 ± 15. SHOWER TAPS-DIVERter: Automatic diverter built into flow handle. SAFETY STOP: 38°C. WARM BODY: Yes. MECHANISM GUARANTEE: 5 years. The Singulier range combine elegant, sensuous lines with graceful curves that come together delicately to create a serene, understated look and tranquil sensibility.. Water saver. Non-return valves on supply hoses. Anti-scale aerator.