



Collection: STANCE

Finish\*:



CP - Chrome

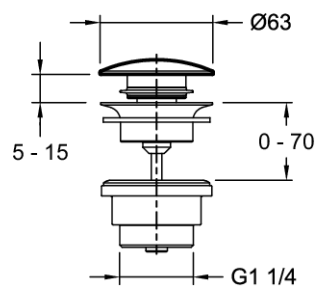
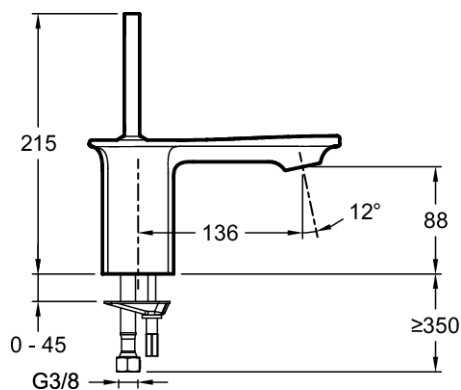
Main features:



### Features

- **WEIGHT:** 2.8 kg
- **INSTALLATION TYPE:** 1 hole
- **TYPE:** Single-lever
- **HEIGHT UNDER SPOUT:** 215
- **CONNECTION:** With supply hoses
- For water savings and comfort of use - reduced spray
- **MATERIAL:** Metal
- **NORMS AND REGULATIONS:** ACS : 10 ACC LY 004
- **FLOW RATE:** 5 l/mn
- **SPOUT PROJECTION:** 136
- **MECHANISM GUARANTEE:** 5 years
- Integral anti-scale aerator

### Technical drawing



Product Specification: Single-lever washbasin mixer - "Joystick" lever. E14760. Collection: STANCE. WEIGHT: 2.8 kg. MATERIAL: Metal. INSTALLATION TYPE: 1 hole. NORMS AND REGULATIONS: ACS : 10 ACC LY 004. TYPE: Single-lever. FLOW RATE: 5 l/mn. HEIGHT UNDER SPOUT: 215. SPOUT PROJECTION: 136. CONNECTION: With supply hoses. MECHANISM GUARANTEE: 5 years. For water savings and comfort of use - reduced spray. Integral anti-scale aerator.