



Collection: JULY

Finish*:



CP - Chrome

Main features:



Features

- **WEIGHT:** 1.5 kg
- **INSTALLATION TYPE:** 1 hole
- **TYPE:** Single-lever
- **CONNECTION:** With supply hoses
- **WASTE :** With
- Side lift rod

- **MATERIAL:** Metal
- **NORMS AND REGULATIONS:** NF : I - ECAU : E0 C2 A2 U3 - Ge3 - ACS : 10 ACCLY 113
- **FLOW RATE:** 10 l/mn
- **SHOWER TAPS-WATER/ENERGY SAVING:** Yes
- **MECHANISM GUARANTEE:** 5 years

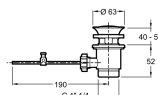
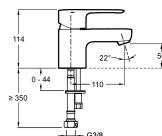
Consumer benefits

- **ANTI-SCALE:** Aerator included
- Sensitive flow control

Installation benefits

- **DURABILITY:** PEX high-resistance supply hoses

Technical drawing



Product Specification: Single-lever washbasin mixer. E16027-4D. Collection: JULY. WEIGHT: 1.5 kg. MATERIAL: Metal. INSTALLATION TYPE: 1 hole. NORMS AND REGULATIONS: NF : I - ECAU : E0 C2 A2 U3 - Ge3 - ACS : 10 ACCLY 113. TYPE: Single-lever. FLOW RATE: 10 l/mn. CONNECTION: With supply hoses. SHOWER TAPS-WATER/ENERGY SAVING: Yes. WASTE : With. MECHANISM GUARANTEE: 5 years. Side lift rod.