



Collection: JULY

Finish*:



CP - Chrome

Main features:



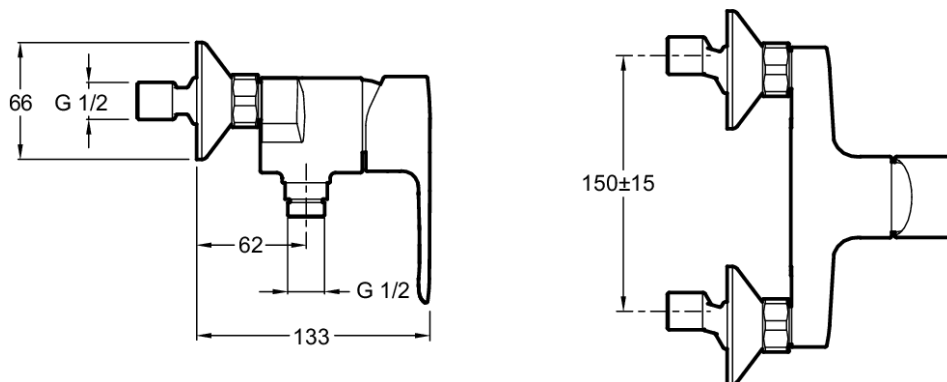
Features

- **WEIGHT:** 1.4 kg
- **INSTALLATION TYPE:** 2 holes
- **TYPE:** Single-lever
- **CONNECTION:** With connectors and wall escutcheons
- **HOLE CONFIGURATION:** 150 ± 15
- **WASTE:** Without
- The July range combines compact curved lines with robust manufacturing for hassle-free installation and use
- Non-return valve on shower outlet
- **MATERIAL:** Metal
- **NORMS AND REGULATIONS:** NF : IA - ECAU : E1 C2 A3 U3 - Ge3 - ACS : 10 ACCLY 113
- **FLOW RATE:** 14 l/mn
- **MECHANISM:** Ceramic disc cartridge
- **SHOWER TAPS-WATER/ENERGY SAVING:** Yes
- **MECHANISM GUARANTEE:** 5 years
- Adjustable temperature limiter ring

Consumer benefits

- Sensitive flow control

Technical drawing



Product Specification: Single-lever wall-mount shower mixer. E16029-4. Collection: JULY. WEIGHT: 1.4 kg. MATERIAL: Metal. INSTALLATION TYPE: 2 holes. NORMS AND REGULATIONS: NF : IA - ECAU : E1 C2 A3 U3 - Ge3 - ACS : 10 ACCLY 113. TYPE: Single-lever. FLOW RATE: 14 l/mn. CONNECTION: With connectors and wall escutcheons. MECHANISM: Ceramic disc cartridge. HOLE CONFIGURATION: 150 ± 15. SHOWER TAPS-WATER/ENERGY SAVING: Yes. WASTE : Without. MECHANISM GUARANTEE: 5 years. The July range combines compact curved lines with robust manufacturing for hassle-free installation and use. Adjustable temperature limiter ring. Non-return valve on shower outlet.