



**Collection:** JULY

**Finish\*:**



CP - Chrome

**Main features:**



### Features

- **WEIGHT:** 1.5 kg
- **INSTALLATION TYPE:** 1 hole
- **TYPE:** Single-lever
- **CONNECTION:** With pillar connectors
- **SHOWER TAPS-WATER/ENERGY SAVING:** Yes
- **SHOWER TAPS-DIVERTER:** Automatic diverter with locking feature
- Anti-scale aerator
- **MATERIAL:** Metal
- **NORMS AND REGULATIONS:** NF : IC/A - ECAU : E3/1 C2 A2 U3 - Ge3
- **FLOW RATE:** 21 l/mn
- **MECHANISM:** Ceramic disc cartridge
- **WASTE :** Without
- **MECHANISM GUARANTEE:** 5 years

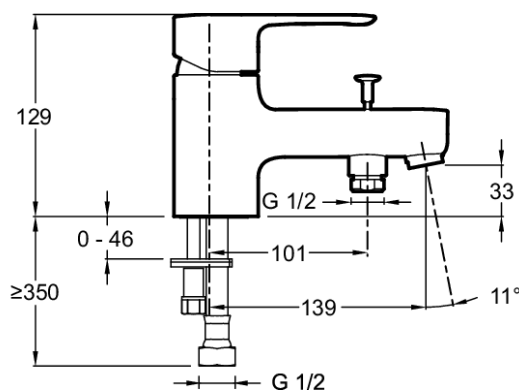
### Consumer benefits

- Temperature control ring.
- WATER-SAVING FEATURE: Sensitive stop.

### Installation benefits

- Supply hoses (L 500 mm) with G1/2 connectors.

### Technical drawing



Product Specification: Single-lever bath/shower mixer. E16044-4. Collection: JULY. WEIGHT: 1.5 kg. MATERIAL: Metal. INSTALLATION TYPE: 1 hole. NORMS AND REGULATIONS: NF : IC/A - ECAU : E3/1 C2 A2 U3 - Ge3. TYPE: Single-lever. FLOW RATE: 21 l/mn. CONNECTION: With pillar connectors. MECHANISM: Ceramic disc cartridge. SHOWER TAPS-WATER/ENERGY SAVING: Yes. WASTE : Without. SHOWER TAPS-DIVERTER: Automatic diverter with locking feature. MECHANISM GUARANTEE: 5 years. Anti-scale aerator.