



**Collection:** OBLO DESIGN

**Finish\*:**



CP - Chrome

**Main features:**



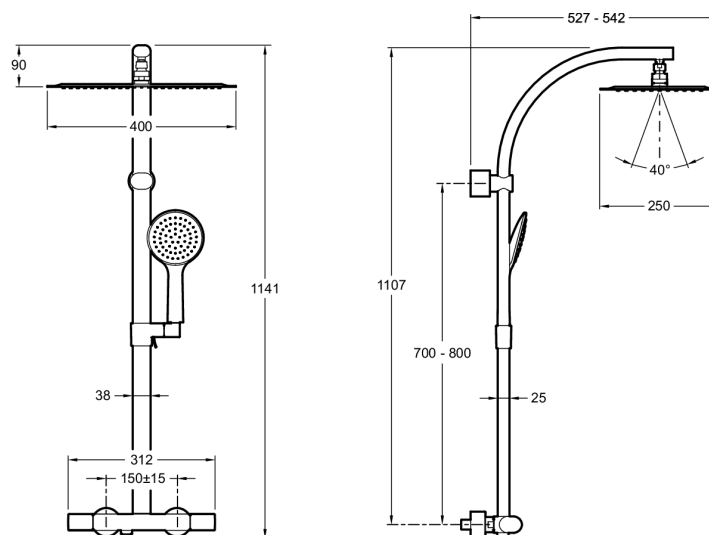
### Features

- **DIMENSIONS:** 114 x 39.50 x 11.90 cm
- **MATERIAL:** Metal
- **NORMS AND REGULATIONS:** ACS : 15 ACC LY 636
- **CONNECTION:** With wall connectors
- **TYPE:** Single-lever
- **WITH OR WITHOUT BRASSWARE:** With
- **WARRANTY DURATION (YEARS):** 5
- Handshower Ø120 mm
- **WEIGHT:** 7 kg
- **INSTALLATION TYPE:** Wall-mount
- **FLOW RATE:** 15 l/mn
- **HOLE CONFIGURATION:** 150
- **SHOWER TAPS-CLASSIFICATION:** Thermostatic
- **SHOWER TAPS-HANDSHOWER FLOW:** 8 l/mn
- Rectangular showerhead 400 x 250 mm
- Non-return valves on supplies.

### Consumer benefits

- **SAFETY:** Warm body, no hot zone on the tap surface
- **EASY CARE:** MasterClean anti-scale system.
- **COMFORT:** Wide showerhead offers generous coverage
- **MAXIMUM SAFETY:** Safety stop at 38°C. Maximum temperature 50°C.
- **COMFORT OF USE:** Swivel handshower on holder and anti-twist hose.
- **DESIGN:** Extra-slim, combining refinement and durability

### Technical drawing



Product Specification: Shower column with thermostatic mixer. E20642. Collection: OBLO DESIGN. DIMENSIONS: 114 x 39.50 x 11.90 cm. WEIGHT: 7 kg. MATERIAL: Metal. INSTALLATION TYPE: Wall-mount. NORMS AND REGULATIONS: ACS : 15 ACC LY 636. FLOW RATE: 15 l/mn. CONNECTION: With wall connectors. HOLE CONFIGURATION: 150. TYPE: Single-lever. SHOWER TAPS-CLASSIFICATION: Thermostatic. WITH OR WITHOUT BRASSWARE: With. SHOWER TAPS-HANDSHOWER FLOW: 8 l/mn. WARRANTY DURATION (YEARS): 5. Rectangular showerhead 400 x 250 mm. Handshower Ø120 mm. Non-return valves on supplies..