



Collection: ODÉON RIVE GAUCHE

Finish*:



CP - Chrome



BL - Matte Black

Main features:



Features

- **DIMENSIONS:** 18.90 x 4.50 cm
- **MATERIAL:** Metal
- **TYPE:** Single-lever
- **HEIGHT UNDER SPOUT:** 189
- **CONNECTION:** With supply hoses
- **MECHANISM GUARANTEE:** 5 years

- **WEIGHT:** 1.3 kg
- **INSTALLATION TYPE:** 1 hole
- **FLOW RATE:** 5 l/mn
- **SPOUT PROJECTION:** 123
- **WASTE :** With
- **FINISH GUARANTEE:** Chrome 10 years

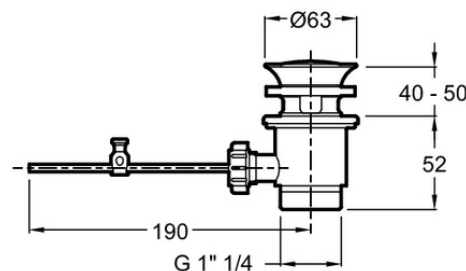
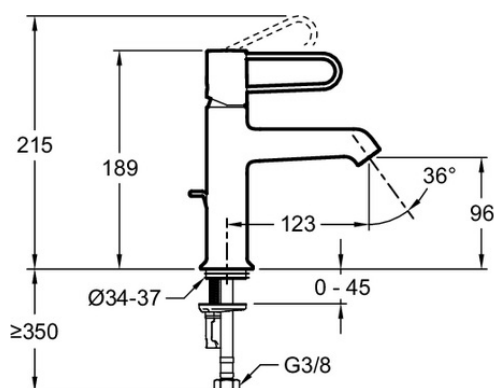
Consumer benefits

- **CUSTOMIZABLE:** A selection of chic, trendy finishes that suit any bathroom needs.
- **COMFORT:** Wide projection angle for a spray directed to the centre of the basin to simplify your daily routine
- **STURDIER THAN IT APPEARS:** Handle in ultra-strong stainless steel, light and cutout for enjoyable handling.
- **HIGH-PRECISION MECHANISM:** Ceramic disc cartridge, precise temperature adjustment, 5-year guarantee.

Installation benefits

- **INSTALLATION IN 35":** Product equipped with the patented 5/35" installation system for fast, easy mounting
- **WITH WASTE:** Waste in same finish as faucet included.

Technical drawing



Product Specification: Single-lever washbasin mixer. E21028-GLD. Collection: ODÉON RIVE GAUCHE. DIMENSIONS: 18.90 x 4.50 cm. WEIGHT: 1.3 kg. MATERIAL: Metal. INSTALLATION TYPE: 1 hole. TYPE: Single-lever. FLOW RATE: 5 l/mn. HEIGHT UNDER SPOUT: 189. SPOUT PROJECTION: 123. CONNECTION: With supply hoses. WASTE : With. MECHANISM GUARANTEE: 5 years. FINISH GUARANTEE: Chrome 10 years.