



Collection: ODÉON RIVE GAUCHE

Finish*:



CP - Chrome



BL - Matte Black

Main features:



Features

- **DIMENSIONS:** 27.30 x 4.50 cm
- **MATERIAL:** Metal
- **TYPE:** Single-lever
- **HEIGHT UNDER SPOUT:** 332
- **CONNECTION:** With supply hoses
- **MECHANISM GUARANTEE:** 5 years

- **WEIGHT:** 2 kg
- **INSTALLATION TYPE:** 1 hole
- **FLOW RATE:** 5 l/mn
- **SPOUT PROJECTION:** 188
- **WASTE :** With
- **FINISH GUARANTEE:** Chrome 10 years, white and black matte 5 years

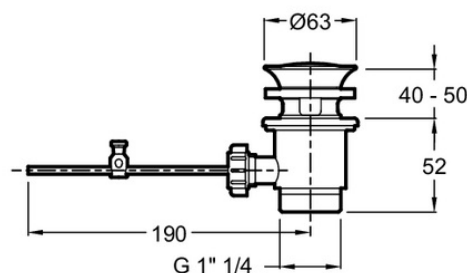
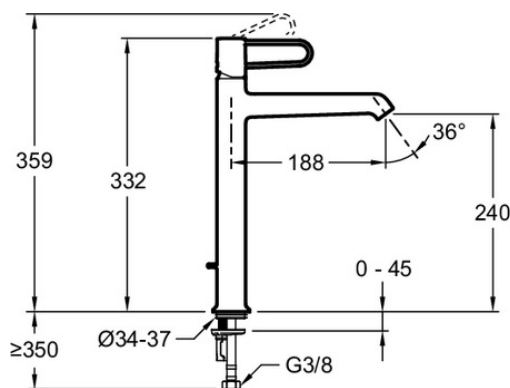
Consumer benefits

- **CUSTOMIZABLE:** A selection of chic, trendy finishes that suit any bathroom needs.
- **COLLECTION:** Jacob Delafon interprets the wire style with Odéon Rive Gauche - reasonable, delicate proportions, sleek body with perfect curves and angles, open, graphic-look wire handle...
- **STURDIER THAN IT APPEARS:** Handle in ultra-strong stainless steel, light and cutout for enjoyable handling.
- **HIGH-PRECISION MECHANISM:** Ceramic disc cartridge, precise temperature adjustment, 5-year guarantee.

Installation benefits

- **STURDY, SOLID INSTALLATION:** Threaded rod on tall versions for better faucet hold.

Technical drawing



Product Specification: Tall single-lever washbasin mixer. E21030-BL. Collection: ODÉON RIVE GAUCHE. DIMENSIONS: 27.30 x 4.50 cm. WEIGHT: 2 kg. MATERIAL: Metal. INSTALLATION TYPE: 1 hole. TYPE: Single-lever. FLOW RATE: 5 l/mn. HEIGHT UNDER SPOUT: 332. SPOUT PROJECTION: 188. CONNECTION: With supply hoses. WASTE : With. MECHANISM GUARANTEE: 5 years. FINISH GUARANTEE: Chrome 10 years, white and black matte 5 years.