



Collection: NO COLLECTION

Finish*:



NF - Neutral

Main features:



Features

- **DIMENSIONS:** 42 x 18 cm
- **INSTALLATION TYPE:** Self-supporting or install in front of a wall, inside a lightweight partition or inside a service duct
- **SINGLE/DUAL FLUSH:** Dual flush
- Supplied with wall fixings set (optional installation)

- **WEIGHT:** 17 kg
- **NORMS AND REGULATIONS:** NF
- **WATER CONSUMPTION:** Standard 3/6 L
- Activation plate not included

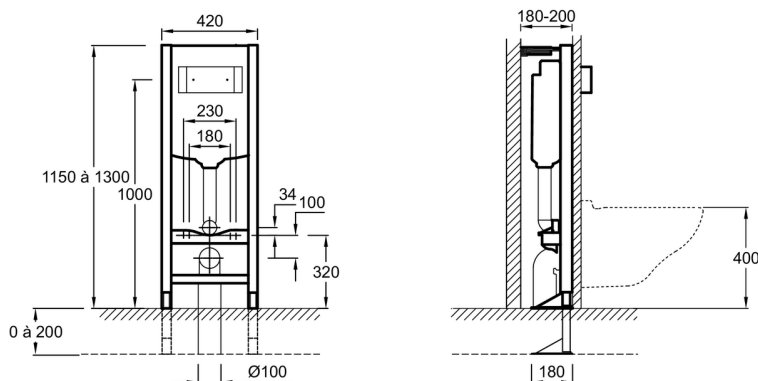
Consumer benefits

- **RESISTANT:** Steel frame withstanding a load of 400 kg, anti-corrosion treatment
- **SOUND COMFORT:** Quiet float valve, Class 1 NF acoustics
- **WATER EFFICIENCY:** Float valve with delayed refill, up to 9L of water saved daily

Installation benefits

- Hands-free height adjustment of the support frame from 0 to 20 cm
- Tool-free locking of the wall brackets

Technical drawing



Product Specification: Support frame. E24155. Collection: NO COLLECTION. DIMENSIONS: 42 x 18 cm. WEIGHT: 17 kg. INSTALLATION TYPE: Self-supporting or install in front of a wall, inside a lightweight partition or inside a service duct. NORMS AND REGULATIONS: NF SINGLE/DUAL FLUSH: Dual flush. WATER CONSUMPTION: Standard 3/6 L. Supplied with wall fixings set (optional installation). Activation plate not included.