

E0 - Single-lever kitchen sink mixer

Jacob Delafon
PARIS

E24161RU



Collection: E0

Finish*:



CP - Chrome

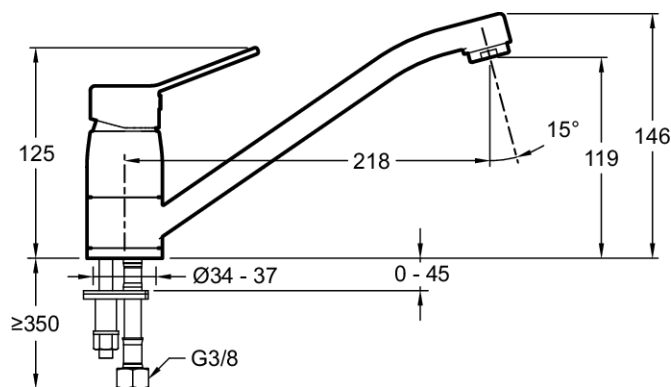
Main features:



Features

- DIMENSIONS: 14.60 cm
- INSTALLATION TYPE: 1 hole
- FLOW RATE: 15 l/min
- MATERIAL: Metal
- TYPE: Single-lever

Technical drawing



Product Specification: Single-lever kitchen sink mixer. E24161RU. Collection: E0. DIMENSIONS: 14.60 cm. MATERIAL: Metal. INSTALLATION TYPE: 1 hole. TYPE: Single-lever. FLOW RATE: 15 l/min.

*Due to possible variations in computer and printer calibrations, technical factors and certain finish characteristics, the colors you see may not accurately portray the actual colors and are provided as a guide only.

www.jacobdelafon.com

This document is not contractual