



Collection: CLÉO 1889

Finish*:



CP - Chrome



BGG - Beige Gold

Main features:



Features

- **DIMENSIONS:** 16 x 21 cm
- **MATERIAL:** Metal
- **TYPE:** Mixer
- **HEIGHT UNDER SPOUT:** 92
- **MECHANISM GUARANTEE:** 5 years
- **WEIGHT:** 2.6 kg
- **INSTALLATION TYPE:** 3 holes
- **FLOW RATE:** 5 l/mn
- **SPOUT PROJECTION:** 123
- **FINISH GUARANTEE:** Chrome 10 years / PVD 25 years

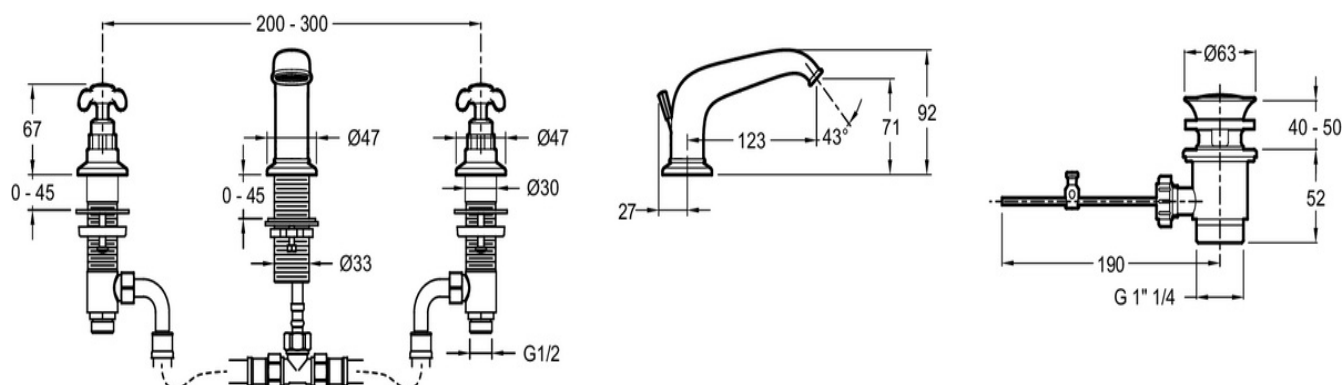
Consumer benefits

- **CHARMING TRADITIONAL STYLE:** Classic lines, selection of fine materials - a collection with a confident retro style.
- **POLISHED CHROME FINISH:** A traditional choice to create a timeless kitchen with a restrained look. 10-year guarantee.
- **BEIGE GOLD FINISH:** A rich, radiant finish that enhances the space thanks the warm reflections that highlight the luxurious side of the collection. PVD finish guaranteed 25 years.
- **CROSS "HOT/COLD" RETRO HANDLES:** Confident, authentic retro design. Carefully crafted model down to the last details, with hot/cold handles reviving a touch from the past.
- **LAMINAR AERATOR:** A unique, "spiral" spray.

Installation benefits

- **SIMPLIFIED INSTALLATION:** Thanks to a fixing kit with a threaded tailpiece

Technical drawing



Product Specification: 3-hole washbasin mixer. E24306. Collection: CLÉO 1889. DIMENSIONS: 16 x 21 cm. WEIGHT: 2.6 kg. MATERIAL: Metal. INSTALLATION TYPE: 3 holes. TYPE: Mixer. FLOW RATE: 5 l/mn. HEIGHT UNDER SPOUT: 92. SPOUT PROJECTION: 123. MECHANISM GUARANTEE: 5 years. FINISH GUARANTEE: Chrome 10 years / PVD 25 years.