

Collection: BRIVE

Finish*:



CP - Chrome

Main features:



Features

- **DIMENSIONS:** 17.10 x 9.10 cm
- **MATERIAL:** Metal
- **NORMS AND REGULATIONS:** NF - ECAU : E3/1 C3 A2 U3 - ACS : 19 ACCLY 719
- **TYPE:** Single-lever
- **CONNECTION:** With connectors and wall escutcheons
- **WASTE :** Without
- **SHOWER TAPS-DIVERTER:** Diverter built into flow handle
- **MAXIMUM TEMPERATURE:** 50°C
- **FINISH GUARANTEE:** 10 years

- **WEIGHT:** 1.9 kg
- **INSTALLATION TYPE:** 2 holes
- **HOSE TYPE:** Smooth, anti-twist
- **FLOW RATE:** 20 l/mn
- **SHOWER TAPS-WATER/ENERGY SAVING:** Yes
- **INSTALLATION TYPE:** WALL-MOUNT
- **SAFETY STOP:** 38°C
- **MECHANISM GUARANTEE:** 5 years
- **Recommendation:** In case of installation on universal columns, it is recommended to also install the hose bend.

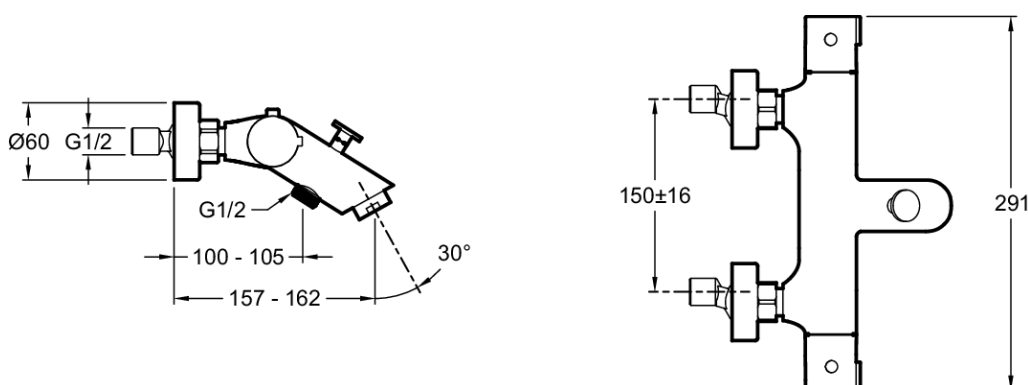
Consumer benefits

- **WATER EFFICIENCY:** Stop saves up to 50% in water, limited water flow and optimal performance
- **ERGONOMICS:** Easy-to-maneuver handles
- **HYGIENE:** Non-return valves on supplies

Installation benefits

- **EASE OF INSTALLATION:** Connectors and wall escutcheons

Technical drawing



Product Specification: Thermostatic single-lever wall-mount bath/shower mixer. E24335. Collection: BRIVE. DIMENSIONS: 17.10 x 9.10 cm. WEIGHT: 1.9 kg. MATERIAL: Metal. INSTALLATION TYPE: 2 holes. NORMS AND REGULATIONS: NF - ECAU : E3/1 C3 A2 U3 - ACS : 19 ACCLY 719. HOSE TYPE: Smooth, anti-twist. TYPE: Single-lever. FLOW RATE: 20 l/mn. CONNECTION: With connectors and wall escutcheons. SHOWER TAPS-WATER/ENERGY SAVING: Yes. WASTE : Without. INSTALLATION TYPE: WALL-MOUNT. SHOWER TAPS-DIVERTER: Diverter built into flow handle. SAFETY STOP: 38°C. MAXIMUM TEMPERATURE: 50°C. MECHANISM GUARANTEE: 5 years. FINISH GUARANTEE: 10 years. Recommendation: In case of installation on universal columns, it is recommended to also install the hose bend..