



Collection: NO COLLECTION

Finish*:



NF - Neutral

Main features:



Features

- **DIMENSIONS:** 42 x 18 cm
- **INSTALLATION TYPE:** Self-supporting or install in front of a wall, inside a lightweight partition or inside a service duct
- **WATER CONSUMPTION:** Low flush 2.6/4 L
- Flush plate not included

- **WEIGHT:** 17 kg
- **NORMS AND REGULATIONS:** NF
- Supplied with wall fixings set (optional installation)

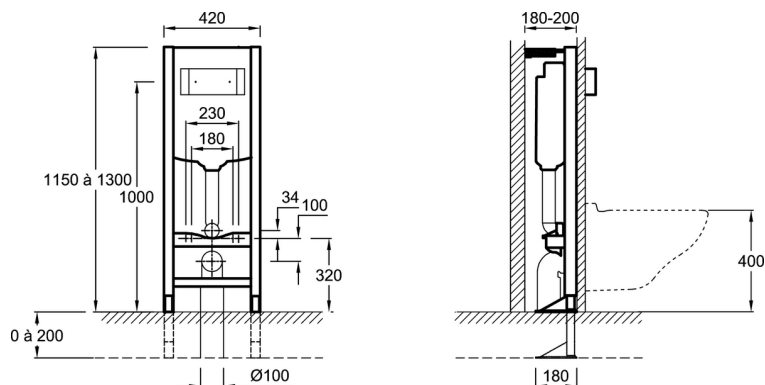
Consumer benefits

- **RESISTANT:** Steel frame withstanding a load of 400 kg, anti-corrosion treatment
- **SOUND COMFORT:** Quiet float valve, Class 1 acoustics
- **WATER EFFICIENCY:** Float valve with delayed refill, up to 9L of water saved daily

Installation benefits

- Hands-free height adjustment of the support frame from 0 to 20 cm

Technical drawing



Product Specification: Support frame. E31669. Collection: NO COLLECTION. DIMENSIONS: 42 x 18 cm. WEIGHT: 17 kg. INSTALLATION TYPE: Self-supporting or install in front of a wall, inside a lightweight partition or inside a service duct. NORMS AND REGULATIONS: NF. WATER CONSUMPTION: Low flush 2.6/4 L. Supplied with wall fixings set (optional installation). Flush plate not included.