

JULY+ - Single-lever basin mixer 3L, S, without drain

E35670-4ND

Jacob Delafon
PARIS



Collection: JULY+

Finish*:



CP - Chrome

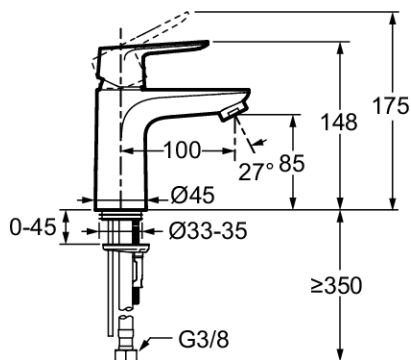
Main features:



Features

- DIMENSIONS: 13.50 x 14.80 cm
- MATERIAL: Brass
- NORMS AND REGULATIONS: ACS : 24 ACC LY 252
- FLOW RATE: 3 l/mn
- SPOUT PROJECTION: 100
- WARRANTY DURATION (YEARS): 10
- WEIGHT: 1 kg
- INSTALLATION TYPE: 1 hole
- TYPE: Single-lever
- HEIGHT UNDER SPOUT: 148
- CONNECTION: With supply hoses

Technical drawing



Product Specification: Single-lever basin mixer 3L, S, without drain. E35670-4ND. Collection: JULY+. DIMENSIONS: 13.50 x 14.80 cm. WEIGHT: 1 kg. MATERIAL: Brass. INSTALLATION TYPE: 1 hole. NORMS AND REGULATIONS: ACS : 24 ACC LY 252. TYPE: Single-lever. FLOW RATE: 3 l/mn. HEIGHT UNDER SPOUT: 148. SPOUT PROJECTION: 100. CONNECTION: With supply hoses. WARRANTY DURATION (YEARS): 10.

**Due to possible variations in computer and printer calibrations, technical factors and certain finish characteristics, the colors you see may not accurately portray the actual colors and are provided as a guide only.*

www.jacobdelafon.com

This document is not contractual