

CUFF - Tall single-lever washbasin mixer

E37303

Jacob Delafon
PARIS



Collection: CUFF

Finish*:



CP - Chrome

Main features:



Features

- **WEIGHT:** 2 kg
- **INSTALLATION TYPE:** 1 hole
- **TYPE:** Single-lever
- **HEIGHT UNDER SPOUT:** 258
- **CONNECTION:** With supply hoses
- **WASTE:** With
- No base plate for easier cleaning
- Finger imprint on handle for better grip

- **MATERIAL:** N/A
- **NORMS AND REGULATIONS:** ACS : 14 ACC LY 113
- **FLOW RATE:** 5 l/mn
- **SPOUT PROJECTION:** 130
- **MECHANISM:** Ceramic disc cartridge
- **MECHANISM GUARANTEE:** 5 years
- Rotating anti-scale aerator
- Height under aerator: 176 mm

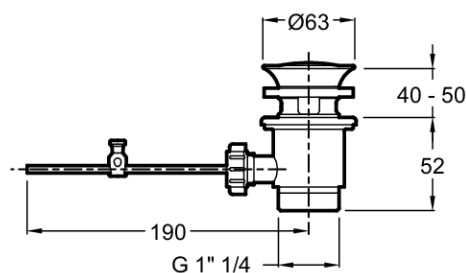
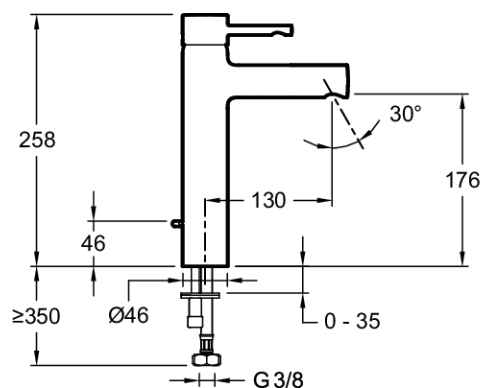
Consumer benefits

- **SAFETY:** Temperature control ring
- **PRACTICAL:** Accessible side lift rod
- **ESTHETIC:** Built-in aerator
- **FINISH:** Chrome guaranteed 10 years

Installation benefits

- **DURABILITY:** PEX high-resistance supply hoses

Technical drawing



Product Specification: Tall single-lever washbasin mixer. E37303. Collection: CUFF. WEIGHT: 2 kg. MATERIAL: N/A. INSTALLATION TYPE: 1 hole. NORMS AND REGULATIONS: ACS : 14 ACC LY 113. TYPE: Single-lever. FLOW RATE: 5 l/mn. HEIGHT UNDER SPOUT: 258. SPOUT PROJECTION: 130. CONNECTION: With supply hoses. MECHANISM: Ceramic disc cartridge. WASTE : With. MECHANISM GUARANTEE: 5 years. No base plate for easier cleaning. Rotating anti-scale aerator. Finger imprint on handle for better grip. Height under aerator: 176 mm.

*Due to possible variations in computer and printer calibrations, technical factors and certain finish characteristics, the colors you see may not accurately portray the actual colors and are provided as a guide only.

www.jacobdelafon.com

This document is not contractual