

STRAYT - Medium single-lever washbasin mixer

E37327

Jacob Delafon
PARIS



Collection: STRAYT

Finish*:



CP - Chrome

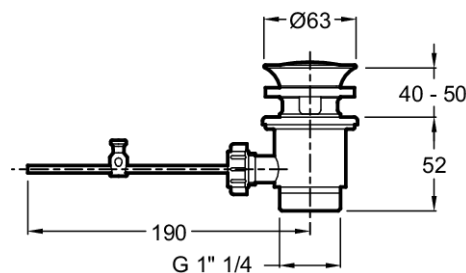
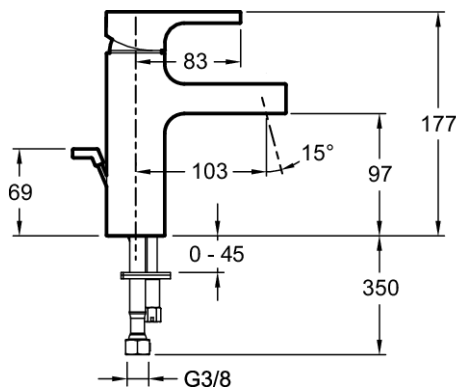
Main features:



Features

- **WEIGHT:** 2.7 kg
- **INSTALLATION TYPE:** 1 hole
- **FLOW RATE:** 5 l/mn
- **SPOUT PROJECTION:** 103
- **MECHANISM:** Ceramic disc cartridge
- Inkl. pop-up drain
- Anti-scale aerator
- **MATERIAL:** Metal
- **TYPE:** Single-lever
- **HEIGHT UNDER SPOUT:** 97
- **CONNECTION:** With supply hoses
- **MECHANISM GUARANTEE:** 5 years
- Water saving feature

Technical drawing



Product Specification: Medium single-lever washbasin mixer. E37327. Collection: STRAYT. WEIGHT: 2.7 kg. MATERIAL: Metal. INSTALLATION TYPE: 1 hole. TYPE: Single-lever. FLOW RATE: 5 l/mn. HEIGHT UNDER SPOUT: 97. SPOUT PROJECTION: 103. CONNECTION: With supply hoses. MECHANISM: Ceramic disc cartridge. MECHANISM GUARANTEE: 5 years. Inkl. pop-up drain. Water saving feature. Anti-scale aerator.

*Due to possible variations in computer and printer calibrations, technical factors and certain finish characteristics, the colors you see may not accurately portray the actual colors and are provided as a guide only.

www.jacobdelafon.com

This document is not contractual