

## STRAYT - Tall single-lever washbasin mixer

E37329

Jacob Delafon  
PARIS



Collection: STRAYT

Finish\*:



CP - Chrome

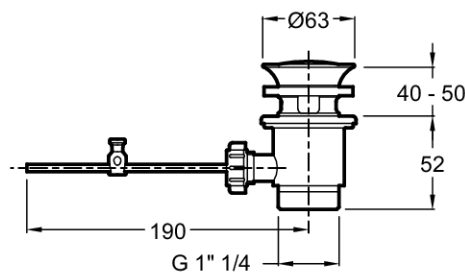
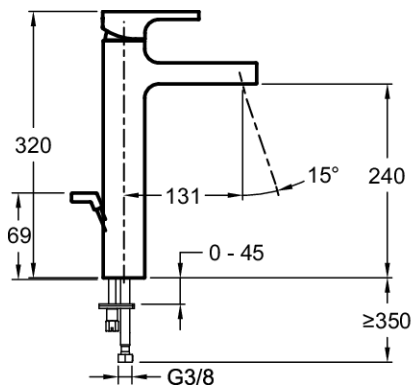
Main features:



### Features

- WEIGHT: 4.1 kg
- INSTALLATION TYPE: 1 hole
- FLOW RATE: 5 l/mn
- SPOUT PROJECTION: 131
- MECHANISM: Ceramic disc cartridge
- Inkl. pop-up drain
- Anti-scale aerator
- MATERIAL: N/A
- TYPE: Single-lever
- HEIGHT UNDER SPOUT: 240
- CONNECTION: With supply hoses
- MECHANISM GUARANTEE: 5 years
- Water saving feature

### Technical drawing



Product Specification: Tall single-lever washbasin mixer. E37329. Collection: STRAYT. WEIGHT: 4.1 kg. MATERIAL: N/A. INSTALLATION TYPE: 1 hole. TYPE: Single-lever. FLOW RATE: 5 l/mn. HEIGHT UNDER SPOUT: 240. SPOUT PROJECTION: 131. CONNECTION: With supply hoses. MECHANISM: Ceramic disc cartridge. MECHANISM GUARANTEE: 5 years. Inkl. pop-up drain. Water saving feature. Anti-scale aerator.

\*Due to possible variations in computer and printer calibrations, technical factors and certain finish characteristics, the colors you see may not accurately portray the actual colors and are provided as a guide only.

www.jacobdelafon.com