

Collection: STRAYT

Finish\*:



CP - Chrome

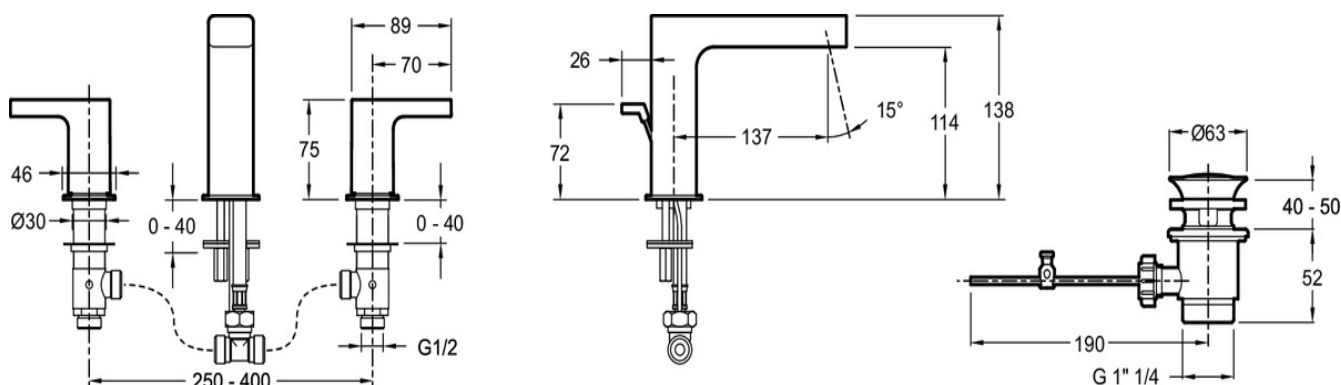
Main features:



### Features

- **WEIGHT:** 4.2 kg
- **INSTALLATION TYPE:** 3 holes
- **TYPE:** Mixer
- **HEIGHT UNDER SPOUT:** 138
- **CONNECTION:** With supply hoses
- **WASTE:** With
- **DRILLING:** Ø 35 mm
- **MATERIAL:** Metal
- **NORMS AND REGULATIONS:** ACS : 15 ACC LY 081
- **FLOW RATE:** 5 l/mn
- **SPOUT PROJECTION:** 137
- **MECHANISM:** Ceramic disc valves
- **MECHANISM GUARANTEE:** 5 years
- Metal waste

### Technical drawing



Product Specification: 3-hole deck-mount washbasin mixer. E37331. Collection: STRAYT. WEIGHT: 4.2 kg. MATERIAL: Metal. INSTALLATION TYPE: 3 holes. NORMS AND REGULATIONS: ACS : 15 ACC LY 081. TYPE: Mixer. FLOW RATE: 5 l/mn. HEIGHT UNDER SPOUT: 138. SPOUT PROJECTION: 137. CONNECTION: With supply hoses. MECHANISM: Ceramic disc valves. WASTE : With. MECHANISM GUARANTEE: 5 years. DRILLING: Ø 35 mm. Metal waste.