



Collection: PATIO

Finish\*:



00 - Gloss White

Main features:



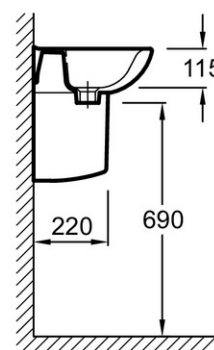
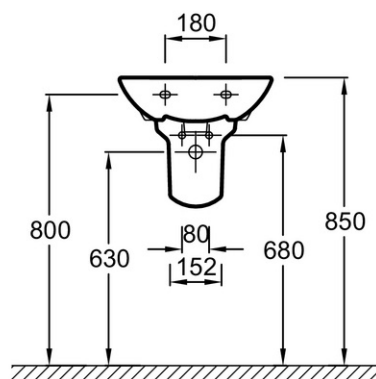
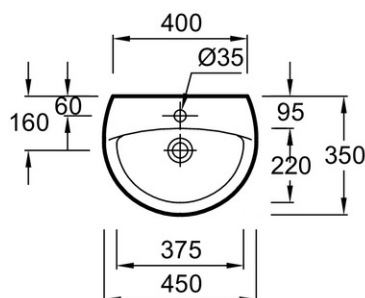
## Features

- **DIMENSIONS:** 45 x 35 cm
- **MATERIAL:** Ceramic
- **NORMS AND REGULATIONS:** NF
- **WARRANTY DURATION (YEARS):** 10
- **WEIGHT:** 8.2 kg
- **INSTALLATION TYPE:** Self-supporting
- **TAP DRILLING:** 1 tap hole
- Functional design with flat and wide ledges

## Consumer benefits

- **FUNCTIONALITY:** Rear ledge for comfort of use every day
- **EASIER CARE:** Soft corners for fast, easy cleaning

## Technical drawing



Product Specification: Handwash basin 45 cm. E4152. Collection: PATIO. DIMENSIONS: 45 x 35 cm. WEIGHT: 8.2 kg. MATERIAL: Ceramic. INSTALLATION TYPE: Self-supporting. NORMS AND REGULATIONS: NF. TAP DRILLING: 1 tap hole. WARRANTY DURATION (YEARS): 10. Functional design with flat and wide ledges.

\*Due to possible variations in computer and printer calibrations, technical factors and certain finish characteristics, the colors you see may not accurately portray the actual colors and are provided as a guide only.