

E62329-F



Collection: FLIGHT PURE

Finish*:



00 - Gloss White

Main features:



Features

- **DIMENSIONS:** 140 x 80 x 2.60 cm
- **MATERIAL:** Flight
- **NORMS AND REGULATIONS:** CE
- **SHAPE:** Rectangular
- **ADHERENCE:** PN 24 per NF standard
- **OPTIONAL RISER KIT:** Yes
- **WEIGHT:** 33 kg
- **INSTALLATION TYPE:** Raised, floorstanding or inset
- **ANTI-SLIP:** Yes
- **SURFACE PATTERN:** Anti-slip texture
- **WASTE SUPPLIED:** Yes
- Optional: Riser kit (height +10/13 cm), watertight strip.

Consumer benefits

- **ROBUSTNESS:** Flight material is very sturdy from dual-component resin topped with an acrylic layer, offering an excellent compromise between strenght, resistance and weight - High resistance to impacts: limited risk of chipping
- **STREAMLINED DESIGN:** Extra-low walk-in shower tray with no inside projection, but sufficient slope to drain water

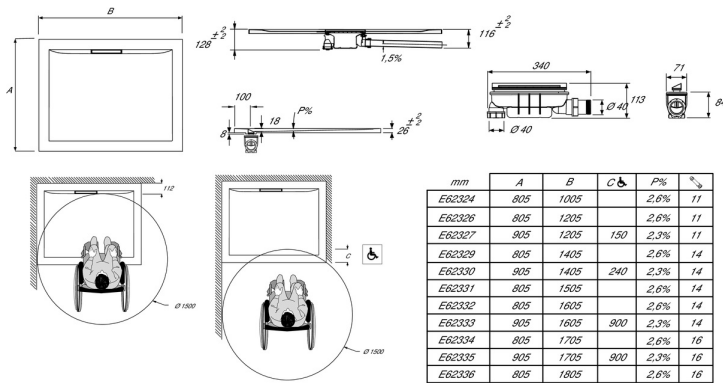
Installation benefits

- **3 INSTALLATION OPTIONS:** Floorstanding, inset or raised, height 2.6 cm.
- **EASY INSTALLATION:** Virtually-straight corners for flush installation with tiling and dimensional accuracy to the nearest millimeter
- **WASTE:** Shower tray supplied with complete waste, water line 50 mm, 2 outlets (horizontal and vertical). Flow rate 29 L/min.

Optional products

- E62751 : Riser kit without apron
- E61426: Riser kit 90 x 90 cm
- E61429: Sealing kit
- E62752: Riser kit without apron
- E61428: Sealing kit

Technical drawing



Product Specification: Rectangular anti-slip shower tray 140 cm. E62329-F. Collection: FLIGHT PURE. DIMENSIONS: 140 x 80 x 2.60 cm. WEIGHT: 33 kg. MATERIAL: Flight. INSTALLATION TYPE: Raised, floorstanding or inset. NORMS AND REGULATIONS: CE. ANTI-SLIP: Yes. SHAPE: Rectangular. SURFACE PATTERN: Anti-slip texture. ADHERENCE: PN 24 per NF standard. WASTE SUPPLIED: Yes. OPTIONAL RISER KIT: Yes. Optional: Riser kit (height +10/13 cm), watertight strip..