



Collection: GALÉO CD

Finish*:



CP - Chrome

Main features:



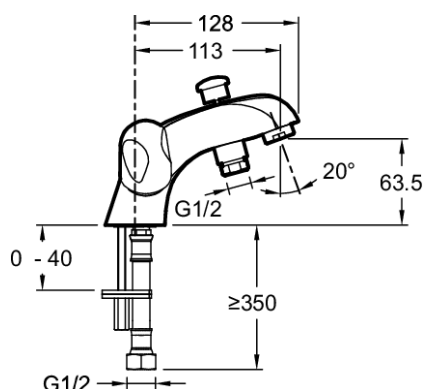
Features

- **WEIGHT:** 1.6 kg
- **INSTALLATION TYPE:** 1 hole
- **TYPE:** Mixer
- **CONNECTION:** With pillar connectors
- **SHOWER TAPS-DIVERTER:** Automatic diverter with locking feature
- Metal handles
- Non-return valve on shower outlet
- **MATERIAL:** Metal
- **NORMS AND REGULATIONS:** NF : IC/A - ECAU : E4/1 A2 U3 - ACS : 10ACCLY238
- **SPOUT PROJECTION:** 113
- **MECHANISM:** Ceramic disc valves
- **MECHANISM GUARANTEE:** 5 years
- Automatic diverter

Consumer benefits

- **ANTI-SCALE:** Aerator included

Technical drawing



Product Specification: Deck-mount bath/shower mixer. E71921. Collection: GALÉO CD. WEIGHT: 1.6 kg. MATERIAL: Metal. INSTALLATION TYPE: 1 hole. NORMS AND REGULATIONS: NF : IC/A - ECAU : E4/1 A2 U3 - ACS : 10ACCLY238. TYPE: Mixer. SPOUT PROJECTION: 113. CONNECTION: With pillar connectors. MECHANISM: Ceramic disc valves. SHOWER TAPS-DIVERTER: Automatic diverter with locking feature. MECHANISM GUARANTEE: 5 years. Metal handles. Automatic diverter. Non-return valve on shower outlet.