

ALEO - Single-lever wall-mount bath/shower mixer

E72282

Jacob Delafon
PARIS



Collection: ALEO

Finish*:



CP - Chrome

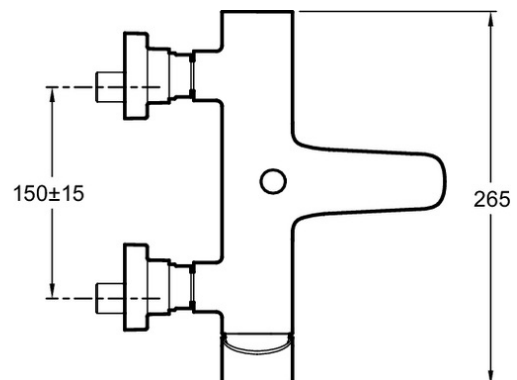
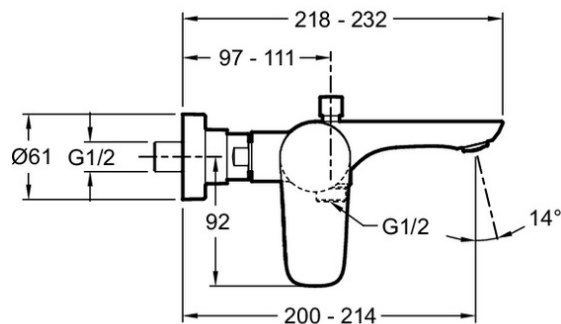
Main features:



Features

- **WEIGHT:** 2.3 kg
- **INSTALLATION TYPE:** 2 holes
- **TYPE:** Single-lever
- **CONNECTION:** With connectors and wall escutcheons
- **HOLE CONFIGURATION:** 150 ± 15
- **MECHANISM GUARANTEE:** 5 years
- **MATERIAL:** Metal
- **NORMS AND REGULATIONS:** NF : IC/B - ECAU : E3/1 C2 A2 U3 - Ge3 - ACS : 10 ACCLY 113
- **FLOW RATE:** 20 l/mn
- **MECHANISM:** Ceramic disc cartridge
- **SHOWER TAPS-DIVERTER:** Automatic pushbutton diverter
- Discreetly-positioned, anti-scale aerator: Easy replacement with no special tool (you can use a coin) and easier cleaning

Technical drawing



Product Specification: Single-lever wall-mount bath/shower mixer. E72282. Collection: ALEO. WEIGHT: 2.3 kg. MATERIAL: Metal. INSTALLATION TYPE: 2 holes. NORMS AND REGULATIONS: NF : IC/B - ECAU : E3/1 C2 A2 U3 - Ge3 - ACS : 10 ACCLY 113. TYPE: Single-lever. FLOW RATE: 20 l/mn. CONNECTION: With connectors and wall escutcheons. MECHANISM: Ceramic disc cartridge. HOLE CONFIGURATION: 150 ± 15 . SHOWER TAPS-DIVERTER: Automatic pushbutton diverter. MECHANISM GUARANTEE: 5 years. Discreetly-positioned, anti-scale aerator: Easy replacement with no special tool (you can use a coin) and easier cleaning.

*Due to possible variations in computer and printer calibrations, technical factors and certain finish characteristics, the colors you see may not accurately portray the actual colors and are provided as a guide only.

www.jacobdelafon.com

This document is not contractual