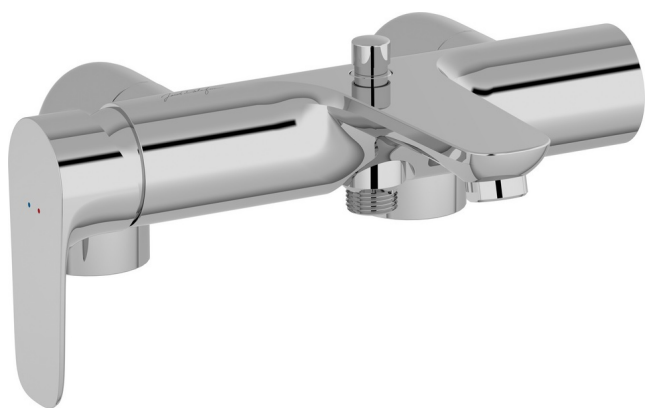


## ALEO - Single-lever deck-mount bath/shower mixer

E72283

Jacob Delafon  
PARIS



Collection: ALEO

Finish\*:



CP - Chrome

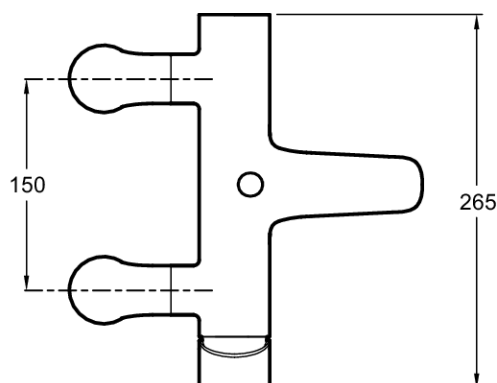
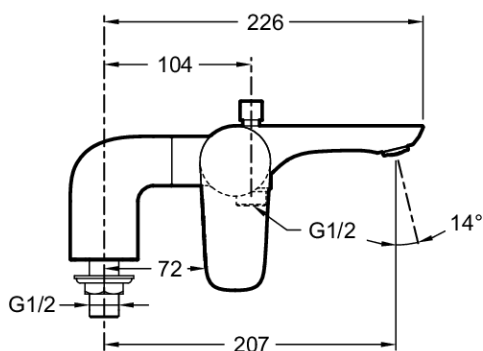
Main features:



### Features

- **WEIGHT:** 3 kg
- **INSTALLATION TYPE:** 2 holes
- **TYPE:** Single-lever
- **CONNECTION:** With pillar connectors
- **HOLE CONFIGURATION:** 150
- **MECHANISM GUARANTEE:** 5 years
- **MATERIAL:** Metal
- **NORMS AND REGULATIONS:** NF : IC/B - ECAU : E3/1 C2 A2 U3 - Ge3 - ACS : 10 ACCLY 113
- **FLOW RATE:** 20 l/mn
- **MECHANISM:** Ceramic disc cartridge
- **SHOWER TAPS-DIVERTER:** Automatic pushbutton diverter

### Technical drawing



Product Specification: Single-lever deck-mount bath/shower mixer. E72283. Collection: ALEO. WEIGHT: 3 kg. MATERIAL: Metal. INSTALLATION TYPE: 2 holes. NORMS AND REGULATIONS: NF : IC/B - ECAU : E3/1 C2 A2 U3 - Ge3 - ACS : 10 ACCLY 113. TYPE: Single-lever. FLOW RATE: 20 l/mn. CONNECTION: With pillar connectors. MECHANISM: Ceramic disc cartridge. HOLE CONFIGURATION: 150. SHOWER TAPS-DIVERTER: Automatic pushbutton diverter. MECHANISM GUARANTEE: 5 years.

\*Due to possible variations in computer and printer calibrations, technical factors and certain finish characteristics, the colors you see may not accurately portray the actual colors and are provided as a guide only.

[www.jacobdelafon.com](http://www.jacobdelafon.com)

This document is not contractual