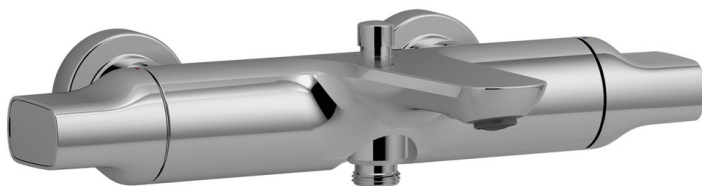


ALEO - Thermostatic single-lever wall-mount bath/shower mixer

E72286

Jacob Delafon
PARIS



Collection: ALEO

Finish*:



CP - Chrome

Main features:



Features

- **WEIGHT:** 3.1 kg
- **INSTALLATION TYPE:** 2 holes
- **TYPE:** Single-lever
- **SPOUT PROJECTION:** 201 - 213
- **MECHANISM:** Expanding wax cartridge
- **SHOWER TAPS-WATER/ENERGY SAVING:** Yes
- **SAFETY STOP:** 37°C
- **MECHANISM GUARANTEE:** 5 years
- **MATERIAL:** Metal
- **NORMS AND REGULATIONS:** NF : ID/A - ECAU : E3/1 C3 A2 U3 - Ge5 - ACS : 10 ACCLY 103
- **FLOW RATE:** 21 l/mn
- **CONNECTION:** With connectors and wall escutcheons
- **HOLE CONFIGURATION:** 150 ± 15
- **SHOWER TAPS-DIVERTER:** Automatic diverter with locking feature
- **WARM BODY:** Yes

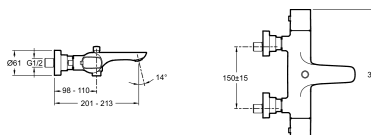
Consumer benefits

- On flow handle: Eco stop to help save water
- **SAFETY:** Maximum temperature set at 50°

Installation benefits

- **EASE OF INSTALLATION:** Connectors and wall escutcheons

Technical drawing



Product Specification: Thermostatic single-lever wall-mount bath/shower mixer. E72286. Collection: ALEO. WEIGHT: 3.1 kg. MATERIAL: Metal. INSTALLATION TYPE: 2 holes. NORMS AND REGULATIONS: NF : ID/A - ECAU : E3/1 C3 A2 U3 - Ge5 - ACS : 10 ACCLY 103. TYPE: Single-lever. FLOW RATE: 21 l/mn. SPOUT PROJECTION: 201 - 213. CONNECTION: With connectors and wall escutcheons. MECHANISM: Expanding wax cartridge. HOLE CONFIGURATION: 150 ± 15. SHOWER TAPS-WATER/ENERGY SAVING: Yes. SHOWER TAPS-DIVERTER: Automatic diverter with locking feature. SAFETY STOP: 37°C. WARM BODY: Yes. MECHANISM GUARANTEE: 5 years.

*Due to possible variations in computer and printer calibrations, technical factors and certain finish characteristics, the colors you see may not accurately portray the actual colors and are provided as a guide only.

www.jacobdelafon.com

This document is not contractual