



**Collection:** ALEO

**Finish\*:**



CP - Chrome

**Main features:**



### Features

- **WEIGHT:** 3.8 kg
- **INSTALLATION TYPE:** 2 holes
- **TYPE:** Single-lever
- **SPOUT PROJECTION:** 208
- **MECHANISM:** Expanding wax cartridge
- **SHOWER TAPS-WATER/ENERGY SAVING:** Yes
- **SAFETY STOP:** 37°C
- **MECHANISM GUARANTEE:** 5 years
- **MATERIAL:** Metal
- **NORMS AND REGULATIONS:** NF : ID/A - ECAU : E3/1 C3 A2 U3 - Ge5 - ACS : 10 ACCLY 103
- **FLOW RATE:** 21 l/mn
- **CONNECTION:** With pillar connectors
- **HOLE CONFIGURATION:** 150 ± 15
- **SHOWER TAPS-DIVERTER:** Automatic pushbutton diverter
- **WARM BODY:** Yes
- Non-return valves on supplies

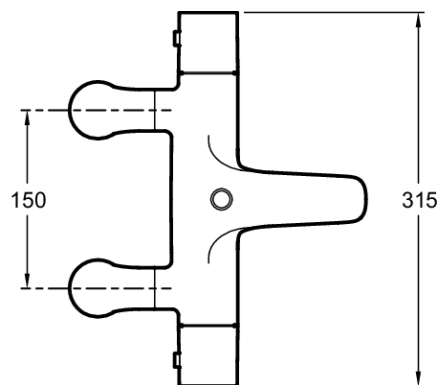
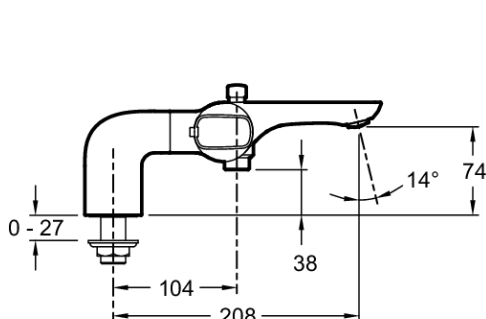
### Consumer benefits

- On flow handle: Eco stop to help save water

### Installation benefits

- **FAST INSTALLATION:** Pillar connectors with O-rings

### Technical drawing



Product Specification: Thermostatic single-lever deck-mount bath/shower mixer. E72287. Collection: ALEO. WEIGHT: 3.8 kg. MATERIAL: Metal. INSTALLATION TYPE: 2 holes. NORMS AND REGULATIONS: NF : ID/A - ECAU : E3/1 C3 A2 U3 - Ge5 - ACS : 10 ACCLY 103. TYPE: Single-lever. FLOW RATE: 21 l/mn. SPOUT PROJECTION: 208. CONNECTION: With pillar connectors. MECHANISM: Expanding wax cartridge. HOLE CONFIGURATION: 150 ± 15. SHOWER TAPS-WATER/ENERGY SAVING: Yes. SHOWER TAPS-DIVERTER: Automatic pushbutton diverter. SAFETY STOP: 37°C. WARM BODY: Yes. MECHANISM GUARANTEE: 5 years. Non-return valves on supplies.