

E73061



Collection: COMPOSED

Finish\*:



CP - Chrome

Main features:



## Features

- **WEIGHT:** 4.5 kg
- **INSTALLATION TYPE:** 2 holes
- **TYPE:** Single-lever
- **SPOUT PROJECTION:** 166 - 176
- **SHOWER TAPS-WATER/ENERGY SAVING:** Yes
- **MECHANISM GUARANTEE:** 5 years
- "Pure" lever
- **MATERIAL:** Brass
- **NORMS AND REGULATIONS:** ACS : 14 ACC LY 511
- **FLOW RATE:** 5 l/mn
- **MECHANISM:** Ceramic disc cartridge
- **WASTE :** Without
- 5

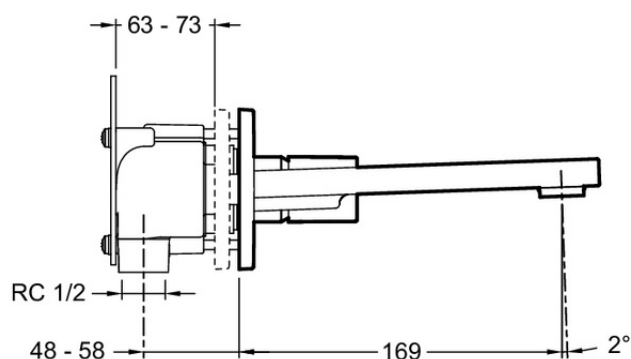
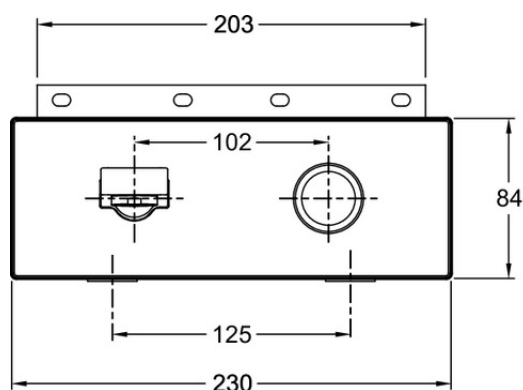
## Consumer benefits

- Anti-scale aerator.

## Installation benefits

- Build-in body supplied

## Technical drawing



Product Specification: Single-lever wall-mount washbasin mixer - "Pure" lever. E73061. Collection: COMPOSED. WEIGHT: 4.5 kg. MATERIAL: Brass. INSTALLATION TYPE: 2 holes. NORMS AND REGULATIONS: ACS : 14 ACC LY 511. TYPE: Single-lever. FLOW RATE: 5 l/mn. SPOUT PROJECTION: 166 - 176. MECHANISM: Ceramic disc cartridge. SHOWER TAPS-WATER/ENERGY SAVING: Yes. WASTE : Without. MECHANISM GUARANTEE: 5 years. 5. "Pure" lever.