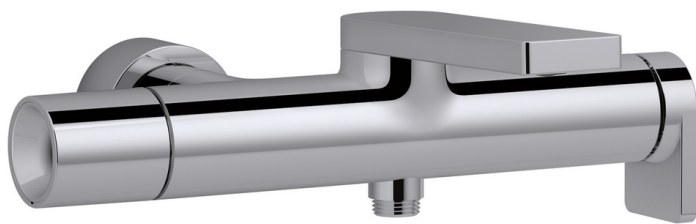


COMPOSED - Single-lever wall-mount bath/shower mixer

E73095

Jacob Delafon
PARIS



Collection: COMPOSED

Finish*:



TT - Titanium



CP - Chrome

Main features:



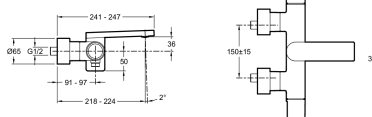
Features

- **WEIGHT:** 4 kg
- **INSTALLATION TYPE:** Wall-mount
- **TYPE:** Single-lever
- **SPOUT PROJECTION:** 218 - 224
- **MECHANISM:** Ceramic disc cartridge
- **WASTE :** Without
- **SHOWER TAPS-DIVERter:** Automatic diverter built into handle
- Non-return valve on shower outlet
- **MATERIAL:** Brass
- **NORMS AND REGULATIONS:** ACS : 14 ACC LY 511
- **FLOW RATE:** 21 l/mn
- **CONNECTION:** With connectors and wall escutcheons
- **HOLE CONFIGURATION:** 150 ± 15
- **INSTALLATION TYPE:** 2 holes
- **MECHANISM GUARANTEE:** 5 years

Consumer benefits

- Anti-scale aerator "pièce", easy to remove, streamlined design
- Titanium PVD finish guaranteed 25 years

Technical drawing



Product Specification: Single-lever wall-mount bath/shower mixer. E73095. Collection: COMPOSED. WEIGHT: 4 kg. MATERIAL: Brass. INSTALLATION TYPE: Wall-mount. NORMS AND REGULATIONS: ACS : 14 ACC LY 511. TYPE: Single-lever. FLOW RATE: 21 l/mn. SPOUT PROJECTION: 218 - 224. CONNECTION: With connectors and wall escutcheons. MECHANISM: Ceramic disc cartridge. HOLE CONFIGURATION: 150 ± 15. WASTE : Without. INSTALLATION TYPE: 2 holes. SHOWER TAPS-DIVERter: Automatic diverter built into handle. MECHANISM GUARANTEE: 5 years. Non-return valve on shower outlet.

*Due to possible variations in computer and printer calibrations, technical factors and certain finish characteristics, the colors you see may not accurately portray the actual colors and are provided as a guide only.

www.jacobdelafon.com

This document is not contractual