



Collection: GALÉO CD

Finish*:



CP - Chrome

Main features:



Features

- **WEIGHT:** 1.3 kg
- **INSTALLATION TYPE:** 1 hole
- **TYPE:** Mixer
- **HEIGHT UNDER SPOUT:** 272
- **WASTE :** Without
- **SPOUT TYPE:** Pivot spout
- Tall swivel tube spout
- Height under aerator: 206 mm
- **MATERIAL:** Metal
- **NORMS AND REGULATIONS:** NF : IIA - EAU : E1 A1 U3 - ACS : 15ACCLY265
- **FLOW RATE:** 15 l/mn
- **SPOUT PROJECTION:** 194
- **TYPE OF KITCHEN TAP:** MECHANICAL
- **MECHANISM GUARANTEE:** 5 years
- Metal handles with finger imprint

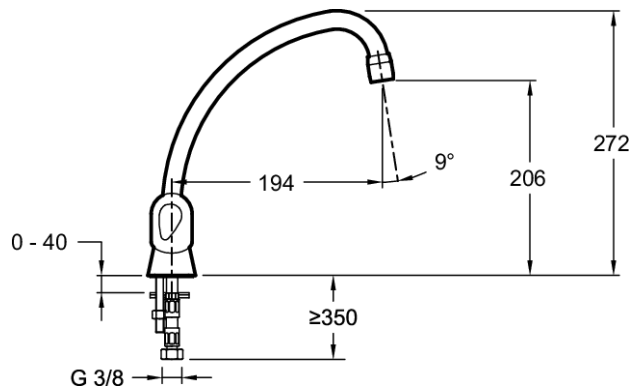
Consumer benefits

- **EASY CARE:** Anti-scale aerator
- **FINISH:** Chrome guaranteed 10 years

Installation benefits

- **DURABILITY:** PEX high-resistance supply hoses

Technical drawing



Product Specification: Kitchen sink mixer. E76920. Collection: GALÉO CD. WEIGHT: 1.3 kg. MATERIAL: Metal. INSTALLATION TYPE: 1 hole. NORMS AND REGULATIONS: NF : IIA - EAU : E1 A1 U3 - ACS : 15ACCLY265. TYPE: Mixer. FLOW RATE: 15 l/mn. HEIGHT UNDER SPOUT: 272. SPOUT PROJECTION: 194. WASTE : Without. TYPE OF KITCHEN TAP: MECHANICAL. SPOUT TYPE: Pivot spout. MECHANISM GUARANTEE: 5 years. Tall swivel tube spout. Metal handles with finger imprint. Height under aerator: 206 mm.