



Collection: JULY

Finish*:



CP - Chrome

Main features:



Features

- **DIMENSIONS:** 20 x 20 cm
- **INSTALLATION TYPE:** Wall-mount
- **FLOW RATE:** 10 l/mn
- **HOLE CONFIGURATION:** 150
- **WITH OR WITHOUT BRASSWARE:** With
- **WARRANTY DURATION (YEARS):** 5

- **MATERIAL:** Metal
- **NORMS AND REGULATIONS:** ACS
- **CONNECTION:** With connectors and wall escutcheons
- **TYPE:** Single-lever
- **SHOWER TAPS-HANDSHOWER FLOW:** 10 l/mn

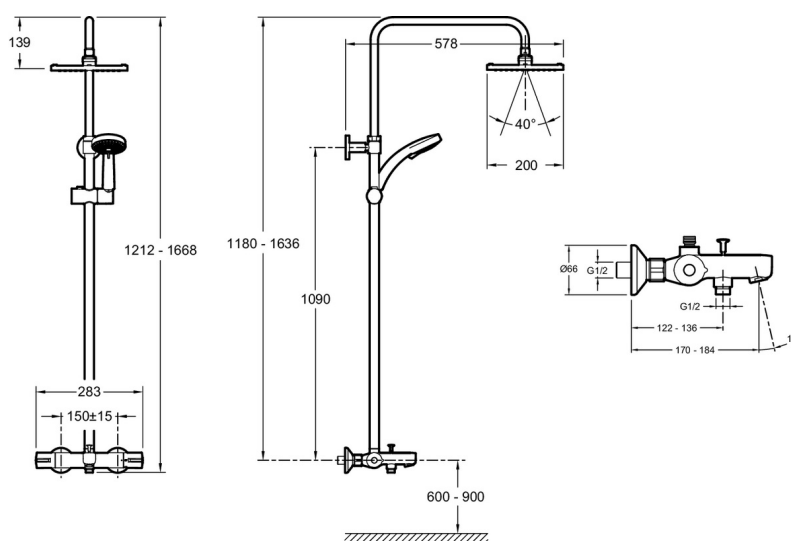
Consumer benefits

- **COMFORT:** Precise adjustment and stable temperature. Temperature variations are quickly regulated.
- **ANTI-SCALDING SAFETY:** Maximum temperature 50°C. Water supplies cut off in case of cold water shutoff. Warm body: No hot zone at the front of the tap.
- **HYGIENE:** Non-return valves to avoid polluting water supplies.
- **DESIGN:** Trendy square showerhead
- **WATER EFFICIENCY:** Maximum showerhead and handshower flow rate - 10 L/min. Bath outlet flow rate: 19 L/min
- **SHOWERING ENJOYMENT:** Showerhead providing excellent body coverage. Multi-spray handshower.

Installation benefits

- **ADJUSTMENT:** Arm can be adjusted during installation

Technical drawing



Product Specification: Thermostatic bath/shower column. E78192. Collection: JULY. DIMENSIONS: 20 x 20 cm. MATERIAL: Metal. INSTALLATION TYPE: Wall-mount. NORMS AND REGULATIONS: ACS. FLOW RATE: 10 l/mn. CONNECTION: With connectors and wall escutcheons. HOLE CONFIGURATION: 150. TYPE: Single-lever. WITH OR WITHOUT BRASSWARE: With. SHOWER TAPS-HANDSHOWER FLOW: 10 l/mn. WARRANTY DURATION (YEARS): 5.