

Collection: CUFF

Finish*:



CP - Chrome

Main features:



Features

- **WEIGHT:** 1.4 kg
- **INSTALLATION TYPE:** 2 holes
- **TYPE:** Single-lever
- **CONNECTION:** With pillar connectors
- **SHOWER TAPS-DIVERTER:** Automatic diverter built into flow handle
- **MECHANISM GUARANTEE:** 5 years

- **MATERIAL:** Metal
- **NORMS AND REGULATIONS:** NF : II*/A - ECAU : E3/1C3A1U3 - ACS : 10 ACC LY 103
- **FLOW RATE:** 20 l/mn
- **SHOWER TAPS-WATER/ENERGY SAVING:** Yes
- **SAFETY STOP:** 38°C
- Warm body: compartmentalized interior

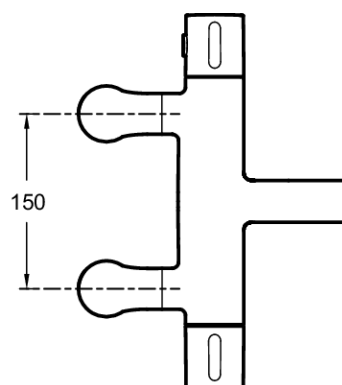
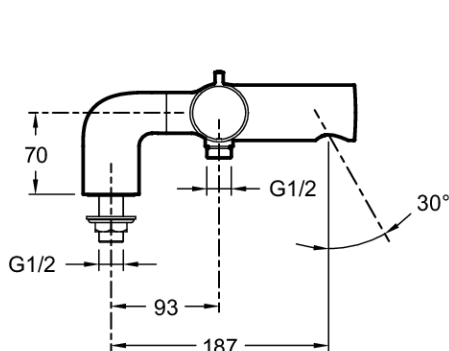
Consumer benefits

- **WATER-SAVING FEATURE:** Sensitive stop
- **NO-SCALD SAFETY:** Safety stop at 37°C. Maximum temperature 50°C and water supplies shut off in case cold water is cut off.
- **EASY MANEUVERING:** Ergonomic handles. Diverter built into handle.
- **DESIGN:** Built-in aerator. Pure cylindrical curves.
- **FINISH:** Chrome guaranteed 10 years

Installation benefits

- **EASY MOUNTING:** Pillar connectors with O-rings for fast mounting

Technical drawing



Product Specification: Thermostatic single-lever deck-mount bath/shower mixer. E78521. Collection: CUFF. WEIGHT: 1.4 kg. MATERIAL: Metal. INSTALLATION TYPE: 2 holes. NORMS AND REGULATIONS: NF : II*/A - ECAU : E3/1C3A1U3 - ACS : 10 ACC LY 103. TYPE: Single-lever. FLOW RATE: 20 l/mn. CONNECTION: With pillar connectors. SHOWER TAPS-WATER/ENERGY SAVING: Yes. SHOWER TAPS-DIVERTER: Automatic diverter built into flow handle. SAFETY STOP: 38°C. MECHANISM GUARANTEE: 5 years. Warm body: compartmentalized interior.