

Collection: T00BI

Finish*:



CP - Chrome

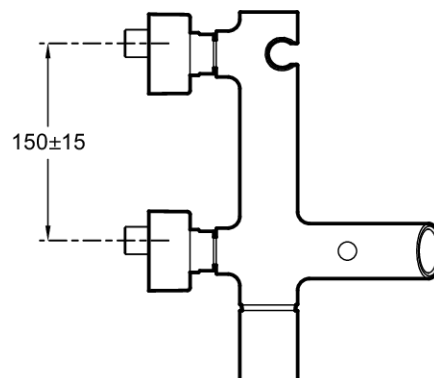
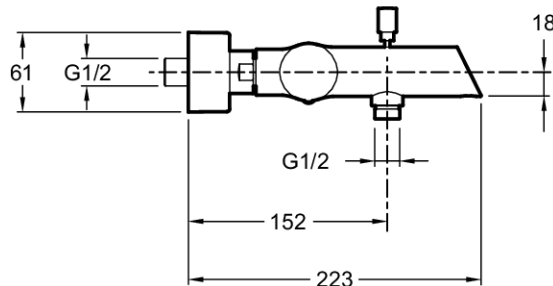
Main features:



Features

- **WEIGHT:** 2.6 kg
- **INSTALLATION TYPE:** 2 holes
- **FLOW RATE:** 30 l/mn
- **MECHANISM:** Ceramic disc cartridge
- **SHOWER TAPS-DIVERTER:** Automatic diverter with locking feature
- **WARRANTY DURATION (YEARS):** 5
- Integrated handshower holder
- **MATERIAL:** Metal
- **TYPE:** Single-lever
- **CONNECTION:** With connectors and wall escutcheons
- **HOLE CONFIGURATION:** 150 ± 15
- **MECHANISM GUARANTEE:** 5 years
- Pop art inspiration
- 2 spout inserts (white and green) for personalization

Technical drawing



Product Specification: Single-lever wall-mount bath/shower mixer. E8963. Collection: T00BI. WEIGHT: 2.6 kg. MATERIAL: Metal. INSTALLATION TYPE: 2 holes. TYPE: Single-lever. FLOW RATE: 30 l/mn. CONNECTION: With connectors and wall escutcheons. MECHANISM: Ceramic disc cartridge. HOLE CONFIGURATION: 150 ± 15 . SHOWER TAPS-DIVERTER: Automatic diverter with locking feature. MECHANISM GUARANTEE: 5 years. WARRANTY DURATION (YEARS): 5. Pop art inspiration. Integrated handshower holder. 2 spout inserts (white and green) for personalization.