

T00BI - Thermostatic single-lever deck-mount bath/shower mixer

E9095

Jacob Delafon
PARIS



Collection: T00BI

Finish*:



CP - Chrome

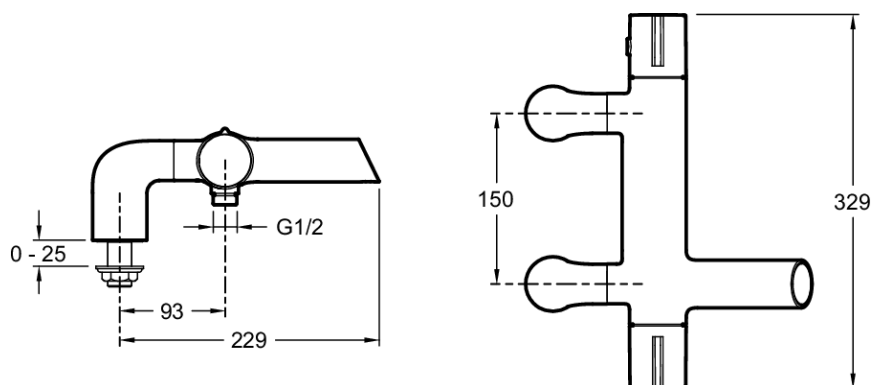
Main features:



Features

- **WEIGHT:** 3.8 kg
- **NORMS AND REGULATIONS:** ACS : 10 ACC LY 102
- **FLOW RATE:** 20 l/mn
- **HOLE CONFIGURATION:** 150 ± 15
- **SAFETY STOP:** 40°C
- **INSTALLATION TYPE:** 2 holes
- **TYPE:** Single-lever
- **CONNECTION:** With pillar connectors
- **SHOWER TAPS-DIVERTER:** Automatic diverter built into flow handle
- **MECHANISM GUARANTEE:** 5 years

Technical drawing



Product Specification: Thermostatic single-lever deck-mount bath/shower mixer. E9095. Collection: T00BI. WEIGHT: 3.8 kg. INSTALLATION TYPE: 2 holes. NORMS AND REGULATIONS: ACS : 10 ACC LY 102. TYPE: Single-lever. FLOW RATE: 20 l/mn. CONNECTION: With pillar connectors. HOLE CONFIGURATION: 150 ± 15. SHOWER TAPS-DIVERTER: Automatic diverter built into flow handle. SAFETY STOP: 40°C. MECHANISM GUARANTEE: 5 years.

*Due to possible variations in computer and printer calibrations, technical factors and certain finish characteristics, the colors you see may not accurately portray the actual colors and are provided as a guide only.

www.jacobdelafon.com

This document is not contractual