



Collection: CARILLON

Finish\*:



0 - White

Main features:



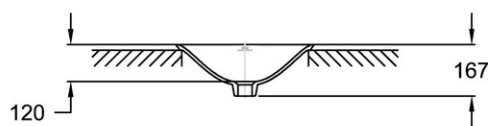
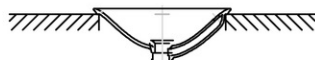
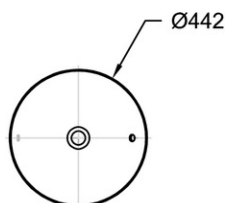
### Features

- DIMENSIONS: 44.20 x 44.20 cm
- MATERIAL: Ceramic
- TAP DRILLING: No tap hole
- WEIGHT: 7.2 kg
- INSTALLATION TYPE: Inset

### Consumer benefits

- DESIGN: Contemporary soft shape
- QUICK CARE: Soft cornerless slopes

### Technical drawing



Product Specification: Inset vanity basin Ø 44 cm. E96118. Collection: CARILLON. DIMENSIONS: 44.20 x 44.20 cm. WEIGHT: 7.2 kg. MATERIAL: Ceramic. INSTALLATION TYPE: Inset. TAP DRILLING: No tap hole.