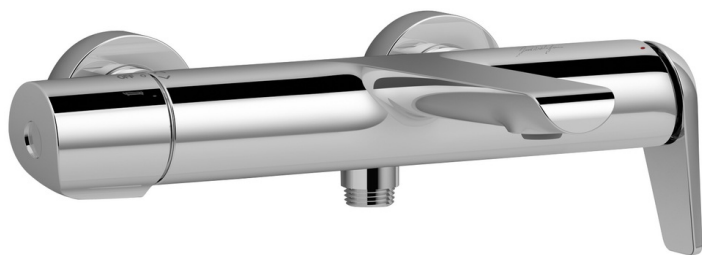


AVID - Single-lever wall-mount bath/shower mixer

E97369

Jacob Delafon
PARIS



Collection: AVID

Finish*:



CP - Chrome

Main features:



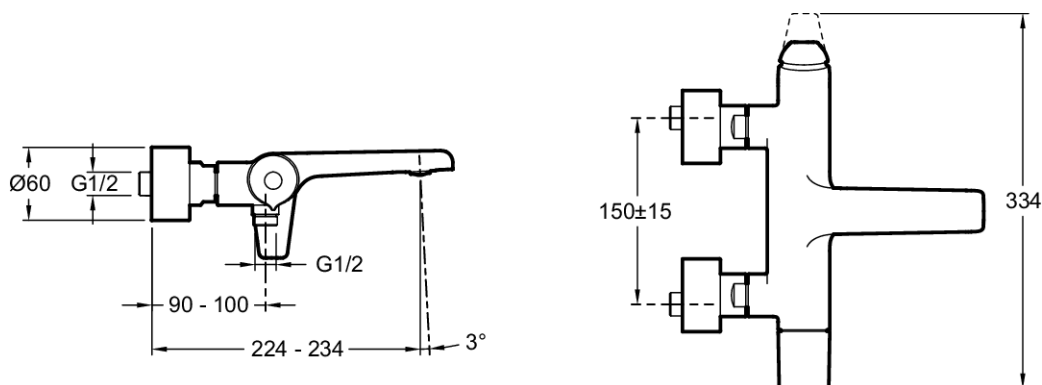
Features

- **WEIGHT:** 3.7 kg
- **INSTALLATION TYPE:** 2 holes
- **TYPE:** Single-lever
- **CONNECTION:** With connectors and wall escutcheons
- **HOLE CONFIGURATION:** 150 ± 15
- **MECHANISM GUARANTEE:** 5 years
- **MATERIAL:** Brass
- **NORMS AND REGULATIONS:** ACS : 14 ACC LY 511
- **FLOW RATE:** 22 l/mn
- **MECHANISM:** Ceramic disc cartridge
- **SHOWER TAPS-DIVERTER:** Automatic diverter built into handle
- Non-return valve on shower outlet

Consumer benefits

- **DESIGNED TO LAST:** One-piece, all brass mixer. Metal handle and cartridge pin provide greater resistance.

Technical drawing



Product Specification: Single-lever wall-mount bath/shower mixer. E97369. Collection: AVID. WEIGHT: 3.7 kg. MATERIAL: Brass. INSTALLATION TYPE: 2 holes. NORMS AND REGULATIONS: ACS : 14 ACC LY 511. TYPE: Single-lever. FLOW RATE: 22 l/mn. CONNECTION: With connectors and wall escutcheons. MECHANISM: Ceramic disc cartridge. HOLE CONFIGURATION: 150 ± 15 . SHOWER TAPS-DIVERTER: Automatic diverter built into handle. MECHANISM GUARANTEE: 5 years. Non-return valve on shower outlet.

**Due to possible variations in computer and printer calibrations, technical factors and certain finish characteristics, the colors you see may not accurately portray the actual colors and are provided as a guide only.*

www.jacobdelafon.com

This document is not contractual