

STRAYT - Single-lever washbasin mixer

E98340

Jacob Delafon
PARIS



Collection: STRAYT

Finish*:



CP - Chrome

Main features:



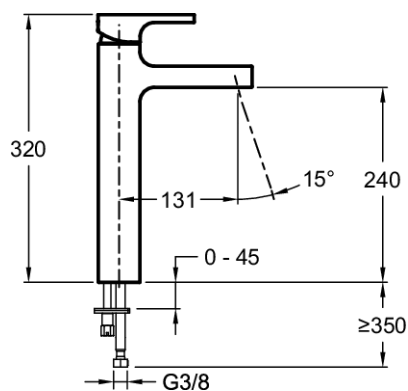
Features

- WEIGHT: 4.2 kg
- INSTALLATION TYPE: 1 hole
- FLOW RATE: 5 l/mn
- SPOUT PROJECTION: 131
- WASTE : Without
- MATERIAL: Metal
- TYPE: Single-lever
- HEIGHT UNDER SPOUT: 240
- CONNECTION: With supply hoses
- MECHANISM GUARANTEE: 5 years

Consumer benefits

- ANTI-SCALE: Aerator included

Technical drawing



Product Specification: Single-lever washbasin mixer. E98340. Collection: STRAYT. WEIGHT: 4.2 kg. MATERIAL: Metal. INSTALLATION TYPE: 1 hole. TYPE: Single-lever. FLOW RATE: 5 l/mn. HEIGHT UNDER SPOUT: 240. SPOUT PROJECTION: 131. CONNECTION: With supply hoses. WASTE : Without. MECHANISM GUARANTEE: 5 years.

**Due to possible variations in computer and printer calibrations, technical factors and certain finish characteristics, the colors you see may not accurately portray the actual colors and are provided as a guide only.*

www.jacobdelafon.com

This document is not contractual