



Collection: STRAYT

Finish*:



CP - Chrome

Main features:

Features

- **DIMENSIONS:** 16.60 x 13.50 cm
- **MATERIAL:** Metal
- **NORMS AND REGULATIONS:** ACS (Certificate of Sanitary Compliance): 10 ACC LY 004
- **TYPE:** Single-lever
- **CONNECTION :** Connect to an outlet (example: showerhead, handshower)
- **WEIGHT:** 2 kg
- **INSTALLATION TYPE:** Built-in
- **FLOW RATE:** 40 l/min
- **COMPONENTS:** Build-in body, trim and handle

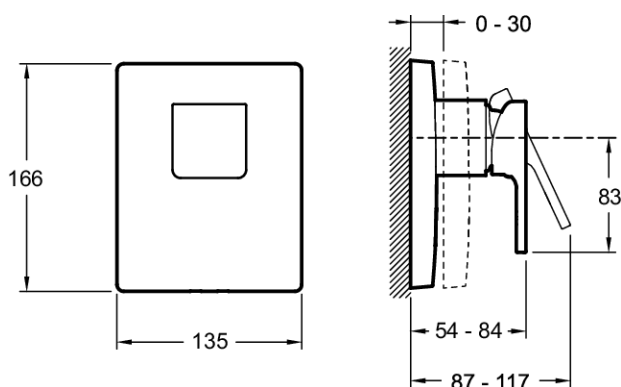
Consumer benefits

- **EVACUATION SYSTEM:** Prevents condensation inside the Modulo box
- **EASY GRIP:** Strayt ergonomic handle

Installation benefits

- **FAST INSTALLATION:** Fixing screws pre-mounted to cartridge box
- **EASY INSTALLATION:** Thanks to guide notches
- **CONVENIENT MAINTENANCE:** Easy access to build-in body (thermostatic cartridge, non-return valves, etc.)

Technical drawing



Product Specification: Built-in shower mixer - no diverter. E98632. Collection: STRAYT. DIMENSIONS: 16.60 x 13.50 cm. WEIGHT: 2 kg. MATERIAL: Metal. INSTALLATION TYPE: Built-in. NORMS AND REGULATIONS: ACS (Certificate of Sanitary Compliance): 10 ACC LY 004. FLOW RATE: 40 l/min. TYPE: Single-lever. COMPONENTS: Build-in body, trim and handle. CONNECTION : Connect to an outlet (example: showerhead, handshower).