



Collection: KUMIN

Finish*:



CP - Chrome

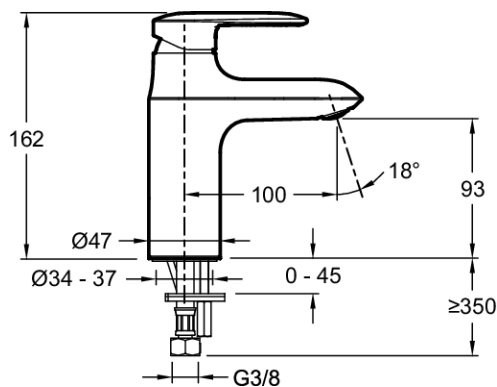
Main features:



Features

- DIMENSIONS: 16.20 cm
- INSTALLATION TYPE: 1 hole
- TYPE: Single-lever
- HEIGHT UNDER SPOUT: 162
- CONNECTION: With supply hoses
- DRILLING: 35 mm
- WEIGHT: 1.5 kg
- NORMS AND REGULATIONS: NF : I - E00 CH2 A3 U3
- FLOW RATE: 5 l/mn
- SPOUT PROJECTION: 100
- MECHANISM GUARANTEE: 5 years

Technical drawing



Product Specification: Single-lever washbasin mixer. E99447. Collection: KUMIN. DIMENSIONS: 16.20 cm. WEIGHT: 1.5 kg. INSTALLATION TYPE: 1 hole. NORMS AND REGULATIONS: NF : I - E00 CH2 A3 U3. TYPE: Single-lever. FLOW RATE: 5 l/mn. HEIGHT UNDER SPOUT: 162. SPOUT PROJECTION: 100. CONNECTION: With supply hoses. MECHANISM GUARANTEE: 5 years. DRILLING: 35 mm.