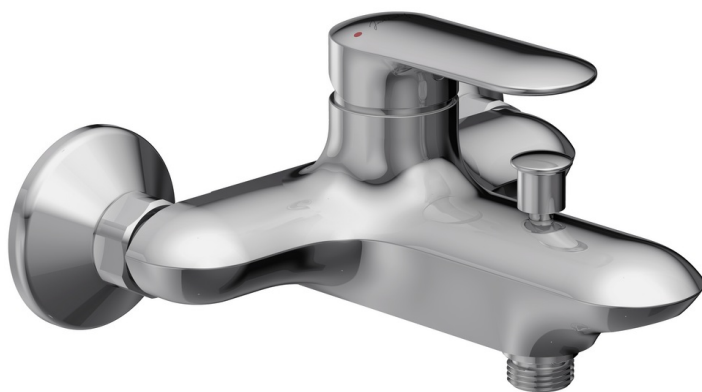


KUMIN - Single-lever wall-mount bath/shower mixer

E99460

Jacob Delafon
PARIS



Collection: KUMIN

Finish*:



CP - Chrome

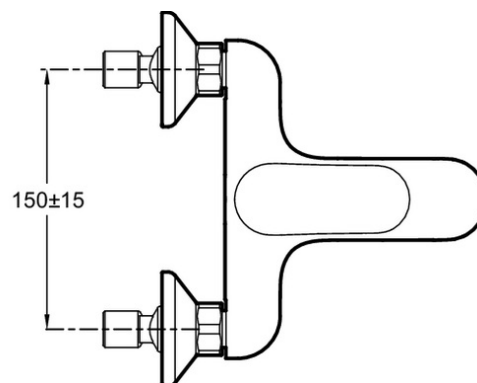
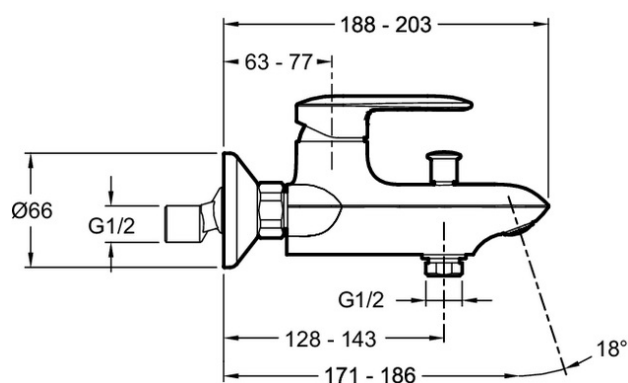
Main features:



Features

- **WEIGHT:** 1.8 kg
- **INSTALLATION TYPE:** 2 holes
- **TYPE:** Single-lever
- **SPOUT PROJECTION:** 203
- **MECHANISM GUARANTEE:** 5 years
- **MATERIAL:** Metal
- **NORMS AND REGULATIONS:** ACS : 10 ACC LY 113 / NF E3/1 C2 A2 U3
- **FLOW RATE:** 22 l/mn
- **CONNECTION:** With connectors and wall escutcheons

Technical drawing



Product Specification: Single-lever wall-mount bath/shower mixer. E99460. Collection: KUMIN. WEIGHT: 1.8 kg. MATERIAL: Metal. INSTALLATION TYPE: 2 holes. NORMS AND REGULATIONS: ACS : 10 ACC LY 113 / NF E3/1 C2 A2 U3. TYPE: Single-lever. FLOW RATE: 22 l/mn. SPOUT PROJECTION: 203. CONNECTION: With connectors and wall escutcheons. MECHANISM GUARANTEE: 5 years.

*Due to possible variations in computer and printer calibrations, technical factors and certain finish characteristics, the colors you see may not accurately portray the actual colors and are provided as a guide only.

www.jacobdelafon.com

This document is not contractual