



Collection: NOUVELLE VAGUE

Finish\*:



E73 - Sliced Oak melamine



G1C - Gloss White lacquer



M90 - Matte Black melamine



N18 - Gloss White melamine



NR2 - Taupe Leather melamine

Main features:



### Features

- **DIMENSIONS:** 45.20 x 30 x 46.80 cm
- **MATERIAL:** Lacquer or melamine
- **INSIDE STORAGE:** 1 shelf
- **ELECTRICAL OUTLET:** No
- **VERSION:** Right
- **WEIGHT:** 8.9 kg
- **INSTALLATION TYPE:** Wall-hung
- **SHELF:** Yes
- **INSIDE FINISH:** Basalt

### Consumer benefits

- **SOUND COMFORT:** Door equipped with a damper close system
- **STORAGE MODULARITY:** Several fixed or removable storage shelves

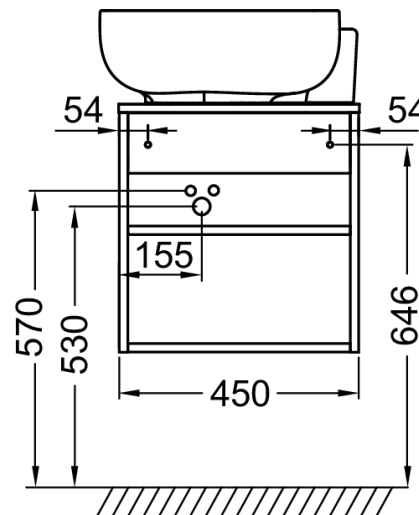
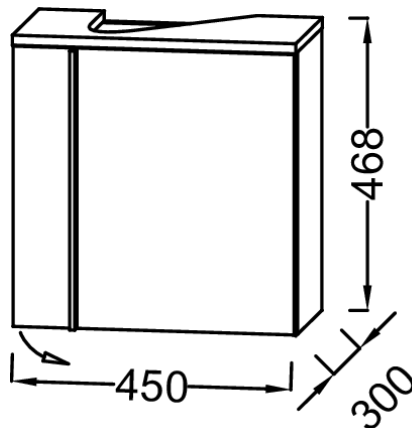
### Installation benefits

- **EASY INSTALLATION:** Assembled cabinet, removable hinges

### Required products

- EGK112: Handwash basin 45 cm

### Technical drawing



Product Specification: Handwash basin base unit 45 cm, RH hinged. EB3045D. Collection: NOUVELLE VAGUE. DIMENSIONS: 45.20 x 30 x 46.80 cm. WEIGHT: 8.9 kg. MATERIAL: Lacquer or melamine. INSTALLATION TYPE: Wall-hung. INSIDE STORAGE: 1 shelf. SHELF: Yes. ELECTRICAL OUTLET: No. INSIDE FINISH: Basalt. VERSION: Right.