



Collection: NOUVELLE VAGUE

Finish*:



N18 - Gloss White
melamine



E73 - Sliced Oak
melamine

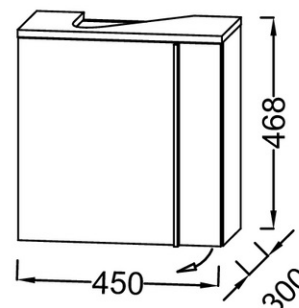
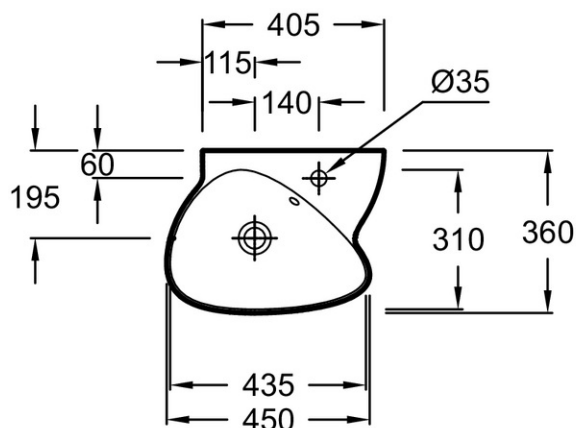
Main features:



Features

- DIMENSIONS: 45.20 x 30 x 46.80 cm
- MATERIAL: Melamine
- STORAGE: Porte
- WEIGHT: 19.9 kg
- INSTALLATION TYPE: Wall-hung
- WARRANTY DURATION (YEARS): 5

Technical drawing



Product Specification: Base unit + handwash basin. EBP3045G. Collection: NOUVELLE VAGUE. DIMENSIONS: 45.20 x 30 x 46.80 cm. WEIGHT: 19.9 kg. MATERIAL: Melamine. INSTALLATION TYPE: Wall-hung. STORAGE: Porte. WARRANTY DURATION (YEARS): 5.