

Collection: STRUKTURA

Finish\*:



00 - Gloss White

Main features:



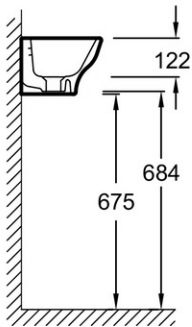
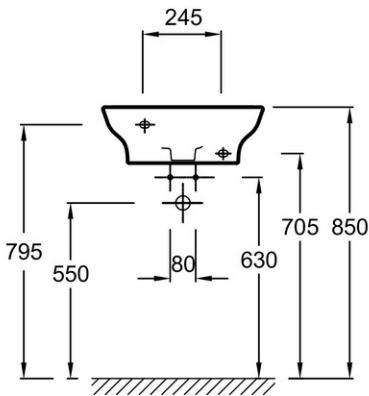
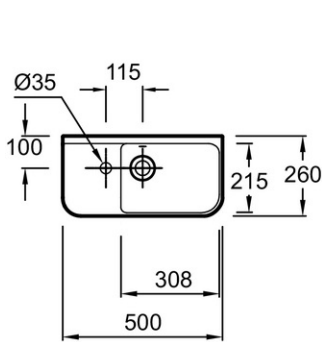
Features

- DIMENSIONS: 50 x 26 cm
- MATERIAL: Ceramic
- INSTALLATION: COMPACT
- OVERFLOW: With overflow hole
- WEIGHT: 10 kg
- INSTALLATION TYPE: Self-supporting
- TAP DRILLING: 1 tap hole
- WARRANTY DURATION (YEARS): 10

Consumer benefits

- DESIGN: Soft geometric design, delicate edges.
- FUNCTIONALITY: Soft slopes for easy cleaning

Technical drawing



Product Specification: Handwash basin 50 cm. EGJ111. Collection: STRUKTURA. DIMENSIONS: 50 x 26 cm. WEIGHT: 10 kg. MATERIAL: Ceramic. INSTALLATION TYPE: Self-supporting. INSTALLATION: COMPACT. TAP DRILLING: 1 tap hole. OVERFLOW: With overflow hole. WARRANTY DURATION (YEARS): 10.

\*Due to possible variations in computer and printer calibrations, technical factors and certain finish characteristics, the colors you see may not accurately portray the actual colors and are provided as a guide only.