

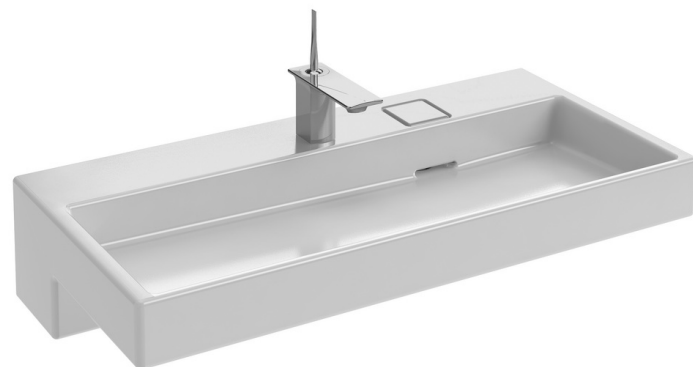
**Collection:** TERRACE

**Finish\*:**



00 - Gloss White

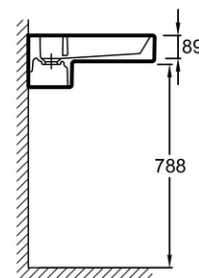
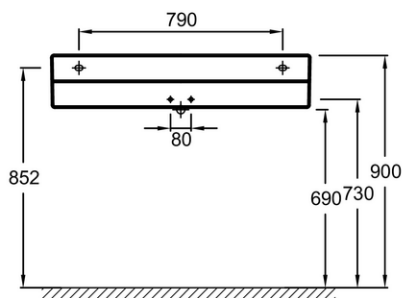
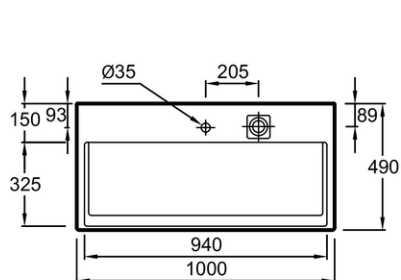
**Main features:**



## Features

- **DIMENSIONS:** 100 x 49 cm
- **MATERIAL:** Ceramic
- **WARRANTY DURATION (YEARS):** 10
- **WEIGHT:** 31.5 kg
- **INSTALLATION TYPE:** Self-supporting or can be mounted on a specific cabinet

## Technical drawing



Product Specification: Vanity top 100 cm. EXC112. Collection: TERRACE. DIMENSIONS: 100 x 49 cm. WEIGHT: 31.5 kg. MATERIAL: Ceramic. INSTALLATION TYPE: Self-supporting or can be mounted on a specific cabinet. WARRANTY DURATION (YEARS): 10.